

Pre-publication draft for submission to third-party artificial intelligence (AI) for facts-evidence-analysis (FEA) check for a developing report on MHPProNews

## **AmeRegCorps. Claytonization. Consolidation. Same Day MHI Called Out for Years of Failure on June as National Homeownership Month MHI Posted Laughable Response. Sunday Weekly MHVille Recap-FEA**

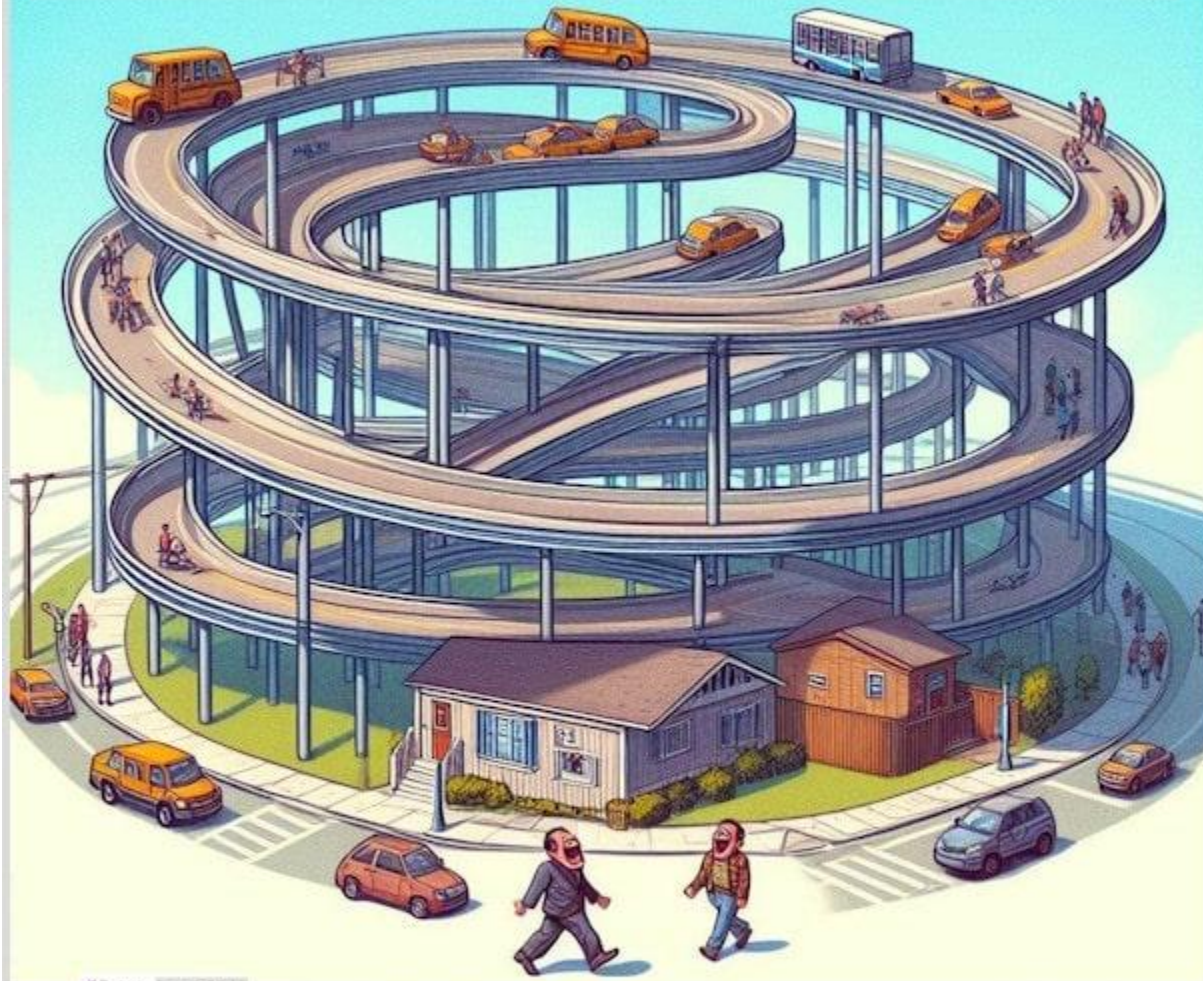
For decades, most American paper (and later digital) maps had what was called 'the legend.' The legend had nothing to do with knights in shining armor or Crusades. Rather, map legends explained what the various symbols on the map represented, a kind of interpretative key. [The word "legend" comes from the Latin word \*legere\*, which means "to read."](#) Once someone knows how to 'read a map' its previously mysterious symbols become clear. Understanding follows. That noted, just as maps benefit from a legend, to properly grasp the landscape of [MHVille](#), researchers and industry pros alike benefit from an [interpretative key](#) or a [legend](#) for understanding the behavior of key industry figures and institutions. Perhaps by chance, by tip, or through years of conditioning, the Manufactured Housing Institute (MHI) posted on 5.29.2026 what might be interpreted as a kind of belated yet oblique response to years of critiques published by [MHPProNews](#) and [MHLivingNews](#) about their [purported 'failure' to properly promote manufactured housing during June, which for decades has been called "National Homeownership Month"](#) in the U.S. Per [MHI's blog post](#): "June is National Homeownership Month." "In 2002, Representative Gary Miller (CA-41) introduced a bill in Congress to recognize June as National Homeownership Month in recognition of the importance of homeownership in building strong communities and families in the United States. MHI CEO Dr. Lesli Gooch served as Senior Policy Advisor and Legislative Director for Rep. Miller and led the roll out and subsequent celebrations for National Homeownership Month." When a visitor to the MHI home page news section or from their website's news landing page of that post's "read more" is clicked, an [MHI website visitor is taken to a page with an "MHI members" only message](#). Meaning, the only thing the non-member visitor sees is this introductory statement: "In 2002, Representative Gary Miller (CA-41) introduced a bill in Congress to recognize June as National Homeownership Month in recognition of the importance of homeownership in building strong communities and families in the United States. MHI CEO Dr. Lesli Gooch served as Senior Policy Advisor and Legislative Director for Rep. Miller and led the roll out and subsequent celebrations for National Homeownership Month." For someone with a proper MHVille legend, those 63 words can be seen as both amusing and classic 2005-2020s MHI communications. An [MHPProNews](#) explanation or MHVille Map Legend is in order.

1. Using the [facts-evidence-analysis](#) (FEA) journalistic methodology, instead of actual manufactured housing *industry* education, marketing, and promotion, apparently MHI once again resorted to posturing and circular or self-praise of MHI itself and their [CEO Lesli Gooch, Ph.D.](#) In this case, her Ph.D. can mean "Piled higher and Deeper."

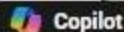
[caption id="" align="aligncenter" width="608"]

"You do not take years to design and build a looping ramp onto a bridge for an elevated highway that circles a city when all you have to do is walk across the street."

- L. A. "Gony" Kovach.



Bing's AI powered Copilot, in response to *MHPRONews* facts and points said this on 5.1.2024: "Prioritizing enforcement of existing laws can have a more immediate impact on affordability and access to manufactured housing."

"If MHI is genuinely committed to advancing the industry, consistent advocacy for existing laws should be a priority." Copilot analysis of questionable and ineffective Manufactured Housing Institute (MHI) tactics. 

Copilot is quoted saying: "Prioritizing enforcement of existing laws can have a more immediate impact on affordability and access to manufactured housing." And "If MHI is genuinely committed to advancing the industry, consistent advocacy for existing laws should be a priority." <https://www.manufacturedhomepronews.com/masthead/cats-out-manufactured-housing->

[institute-housing-coalition-letter-to-congress-fact-check-analysis-reveals-what-mhi-nar-nahb-mba-others-did-didnt-request-ai-affordable-housing-surprises-await/](#)[/caption]

2. A prior interpretative key offered by MHPProNews, using Microsoft Bing's artificial intelligence (AI) tool known as Copilot, was the one below. That one was a *terminology* tool. The typo and duplication are in the original created by Copilot. AI continues to evolve, and some might say, improve.

[caption id="attachment\_217130" align="aligncenter" width="651"]

# TERMINOLOGY 101: DECODE MHVille's CRISIS

## PALTER

Misleads using technically true statements.

## POSTURE

Pretend to advocate while falling to act.

## PROJECTING

Accuse others of what you're doing.

## ILLUSORY TRUTH EFFECT

Repetition makes falsehoods seem true.

## OPTICS

Surface-level appearance used to mislead.

## THROTTLING PRODUCTION = CONSOLIDATION

Restricting supply boosts market control.

## MOAT

Strategic barrier

=

Strategic barrier to competition

## PROJECTING

Accuse others of what you're doing.

## REGULATORY CAPTURE

Agencies serve industry interests over public.

## IRON TRIANGLE

Alliance of industry, regulators, and lawmakers.

## NONPROFIT-CAPTURE

Nonprofits serve funders, not mission

### HISTORICAL CONTRAST | MHMA VS. MHI

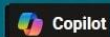
Hands-on community development aiding over 200 000 home sites

Photo ops, videos rarely enforces laws like MHIA 2000

### PRODUCTION COULD EXPAND VIA:

- MHIA 2000 Enhanced Preemption
- DTS (Duty to Serve) Support for Chattel Loans
- Information Campaign (e.g., GoRVing)

MHProNews



<https://www.manufacturedhomepronews.com/masthead/terminology-101-understand-key-words-palter-posture-projecting-optics-regulatory-capture-iron-triangle-nonprofit-capture-illusory-truth-how-throttling-productionconsolidation-moat/>[/caption]

3. AmeRegCorp. Claytonization. The Lap Dance thesis and Fool's Gold thesis.