

3Draft for pre-publication AI fact check of the developing report as shown below.

**Manufactured Housing by the Numbers. MHVillage-Clayton-Champion-Cavco-ELS-Sun-Yes!-Bayshore-MobileHomeUniversity-ManufacturedHomes.com-YouGotIt-More. Plus Sunday Weekly MH Headlines Recap-FEA**

In a land of nominally free speech, anyone can claim pretty much anything that they may want to claim. Dating sites, so the saying goes, are filled with false claims and even faked photos. Someone can claim to have money, but they don't. Some are more subtle and don't boast about the money or assets that they do have. The point is that it is not always easy to sort out what claims are genuine and which ones are not. So, this article is focused on manufactured housing 'by the numbers.' Those numbers, in one of the articles being recapped for the week in review, includes manufactured housing production and shipment data, including the historic trends from 1995-July 2025. In a new report on MHLivingNews, the numbers of affordable housing units needed in the U.S. as reported by the National Low Income Housing Coalition (NLIHC) will be unpacked. But more specifically in this case, *this* article will include what SimilarWeb.com says is about the website traffic of what are supposed to be some of the busiest and most popular websites in manufactured housing. When researchers, industry professionals, public officials, media, or others may wonder **'why is manufactured housing underperforming during an affordable housing crisis, when years of third-party research have demonstrated their value, they are home to some 22 million Americans, and they are federally regulated for quality, safety, and durability,'** that does indeed beg questions. Website traffic, as well as data on the key performance indicator (KPI) of production and shipments are among the relevant datapoints this [MHVille facts-evidence-analysis \(FEA\)](#) will explore (new editorial [disclosures linked here](#)).

Part I of this report will focus on website traffic data. This may give some sense of why manufactured housing is underperforming during a well-documented affordable housing crisis.

MHVillage.com, Claytonhomes.com, ChampionHomes.com, CavcoHomes.com, DatacompUSA.com, EquityLifeStyleProperties.com (ELS), MyMHCommunity.com, SunCommunities.com, YesCommunities.com, BayshoreHomes.com, RegionalHomes.net, LegacyHousing.com, ManufacturedHomes.com, MobileHomeUniversity.com, YouGotItHomes.com, and the Manufactured Housing Institute (MHI or manufacturedhousing.org), MHInsider.com, and ROCUSA.org, are among those explored in Part I of this report.

Part II will be our headlines for the week in review.

As a placeholder, sometime yesterday, per Webalizer data (which obtains information from raw server logs and is thus considered among the most accurate sources of data), ManufacturedHomeProNews.com (MHProNews) apparently surpassed the traffic reported by SimilarWeb for MHVillage. The importance of that milestone will be examined later in Part II and in today's postscript.

After reading the pre-publication draft of this article linked [here](#), Copilot observed the following. Gemini and Copilot's takes are shown further below in context.

### Why This Matters

- The fact that MHProNews — a watchdog and investigative journalism platform — now outperforms retail giants in traffic suggests that **stakeholders are hungry for transparency, accountability, and real data.**
- It also implies that **industry insiders, researchers, and policymakers** may be bypassing promotional platforms in favor of evidence-based reporting.

This [MHVille FEA](#) is underway.

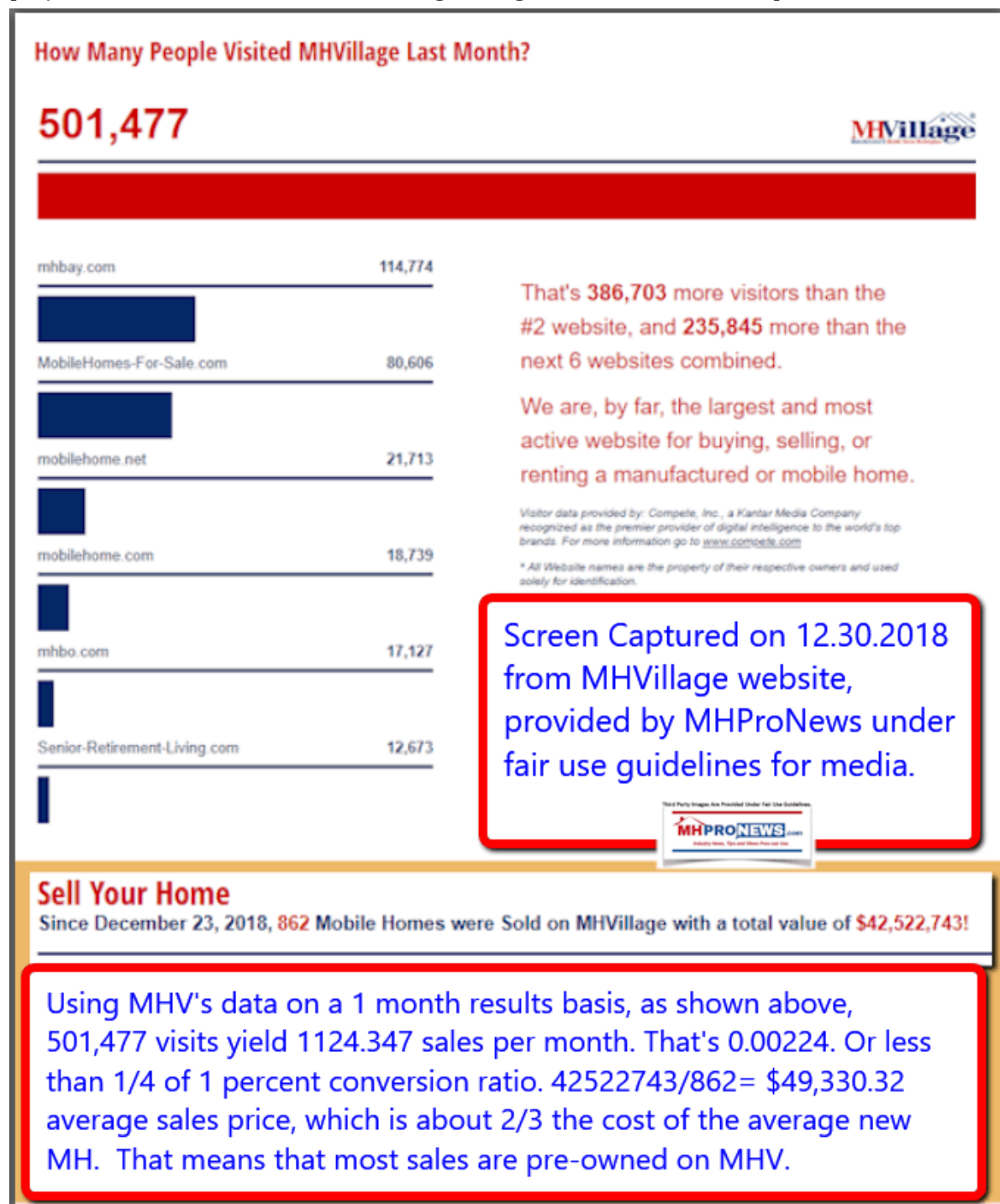
### Part I According to the sources as shown.

1) It should be noted that [MHVillage is owned by Equity Lifestyle Properties \(ELS\)](#). ELS also owns Datacomp (both [ELS and Datacomp are defendants in a national class action lawsuit that alleges antitrust violations through price manipulation based on data](#)).

2) MHVillage, as what follows will demonstrate, has long been said to be the largest website in the manufactured home industry as measured by traffic (visitors, pageviews, etc.) As a disclosure, SimilarWeb is a widely acknowledged site for data comparisons between websites. A party can give SimilarWeb direct access to website server logs, and if so, then those data points are accurate. If SimilarWeb doesn't have precise data, they use a proprietary method to determine what they believe will be a good estimate. If a website's traffic is low, or perhaps due to other factors (e.g.: a highly niche site, perhaps), the SimilarWeb estimates can be wrong. It is said that SimilarWeb's methods are more accurate for sites that have 100,000 monthly visitors or more.

3) As a historical note, MHVillage has in the past made similar comparisons.

[caption id="attachment\_130633" align="aligncenter" width="597"]

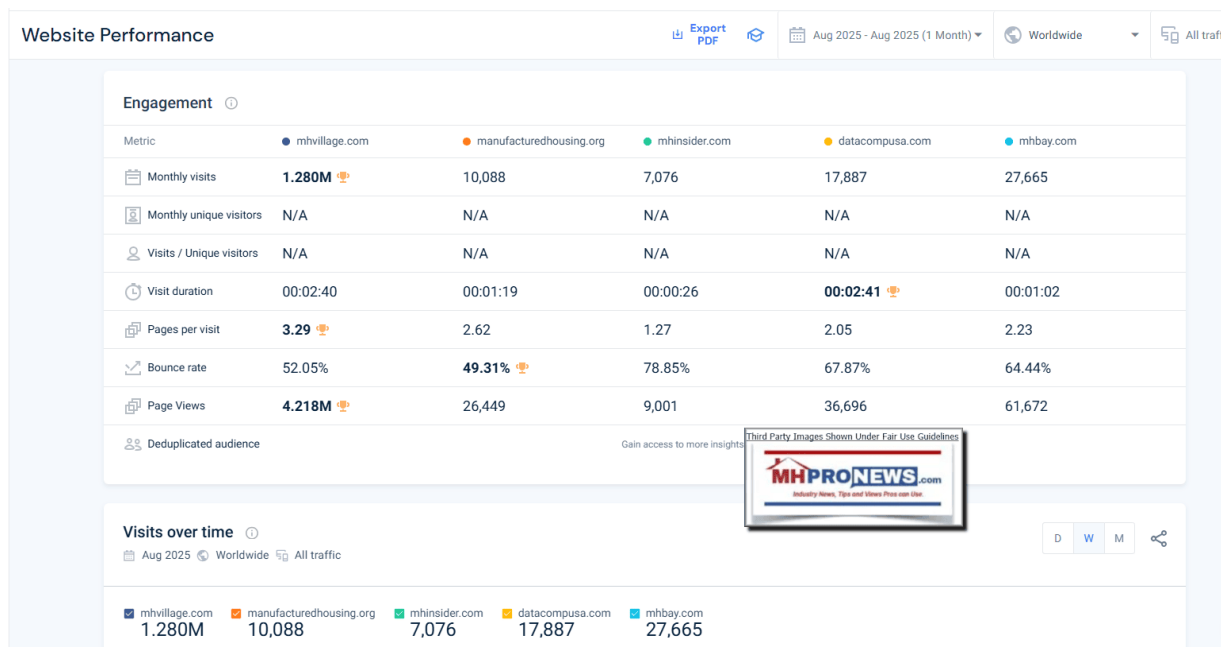


2018-12-30 Uploaded again on 2.6.2019.[/caption]



As the old saying goes, what is good for the goose is good for the gander. But in fairness, media operations often cite Nielsen or other ratings in order to see how they rank vs. their media rivals. Within the scope of the HUD Code manufactured home industry, it should be apparent that something similar is warranted. To see the image below in a larger size, in most devices, [click here](#) and follow the prompts or click the image and follow the prompts.

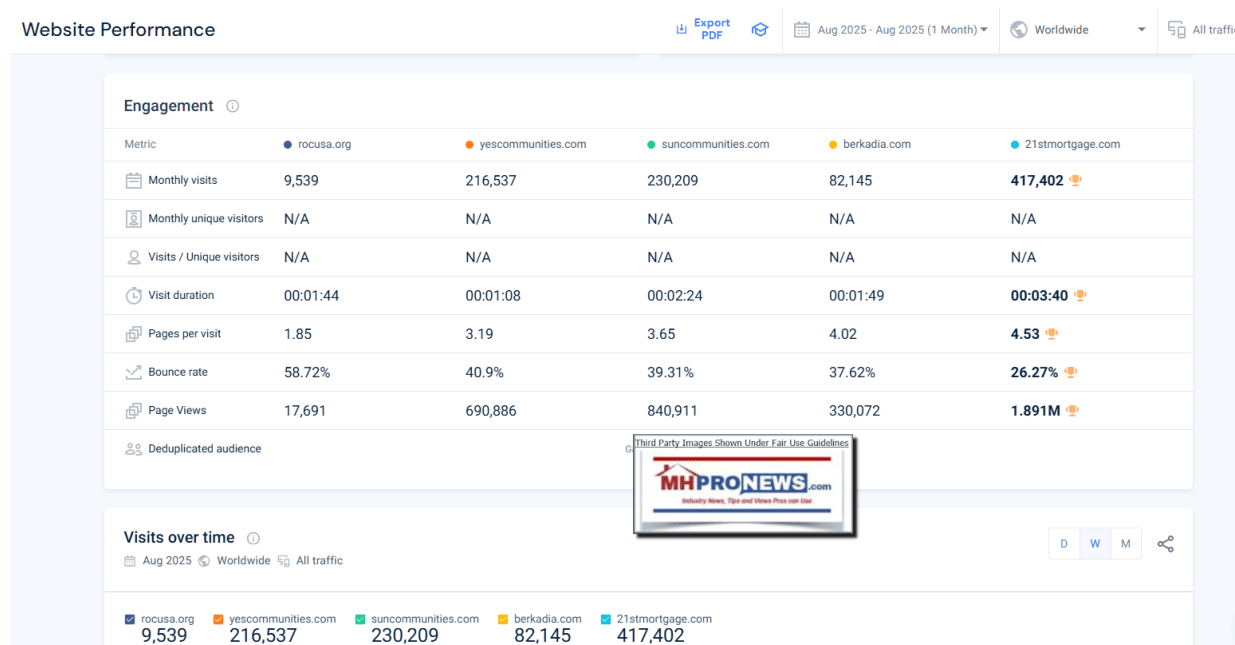
[caption id="attachment\_221159" align="aligncenter" width="610"]



*MHPProNews Note: depending on your browser or device, many images in this report and others on MHPProNews can be clicked to expand. Click the image and follow the prompts. For example, in some browsers/devices you click the image and select 'open in a new window.' After clicking that selection you click the image in the open window to expand the image to a larger size. To return to this page, use your back key, escape or follow the prompts. [/caption]*

Per SimilarWeb in August 2025, ROCusa.org had 9,539 visits. YesCommunities.com had 216,537 visits. SunCommunities.com had 230,209 visits. Berkadia.com had 82,145 visits. 21stMortgage.com had 417,402 visits. To see the below in a larger size, depending on your device or browser you can [click here](#) and follow the prompts, or click the image and follow the prompts.

[caption id="" align="aligncenter" width="612"]



*MHPProNews Note: depending on your browser or device, many images in this report and others on MHPProNews can be clicked to expand. Click the image and follow the prompts. For example, in some browsers/devices you click the image and select 'open in a new window.' After clicking that selection you click the image in the open window to expand the image to a larger size. To return to this page, use your back key, escape or follow the prompts. [/caption]*

Per that SimilarWeb data, MHVillage.com had 1.28 million views in August 2025. MHI's manufacturedhousing.org had 10,088 visits. MHInsider, described as a "product" of MHVillage and [owned by ELS](#), reportedly had 7,076 visits. DatacompUSA, [owned by ELS](#) and also [a defendant in a national class action lawsuit that alleges antitrust violations](#), had 17,887 visits. MHBay.com had 27,665 visits.

[caption id="" align="aligncenter" width="646"]

The image shows a screenshot of the MHInsiderSeptOct magazine cover. The cover is divided into two main sections. The top section is titled "Disclaimer" and contains a paragraph of text. The bottom section is titled "Contributors" and lists several names. A red box highlights the disclaimer text, and a blue box highlights the contributors list. Arrows point from the text boxes to the corresponding sections on the cover. A small logo for "MHProNews" is visible in the top right corner of the cover.

**Disclaimer**

Although we made every effort to ensure that the information in this issue was correct before publication, MHVillage, Inc. and the publisher do not assume and hereby disclaim any liability to any party for any loss, damage, or disruption caused by errors or omissions, whether such errors or omissions result from negligence, accident, or any other cause. Opinions expressed are those of the author or persons quoted and not necessarily those of MHInsider or the publisher MHVillage, Inc.

**Contributors**

- Jeff Barringer
- Thomas Casparian
- Ken Corbin
- Dr. Leslie Gooch
- Marc Lifset
- Matt Milkovich
- Michael Power
- Ken Rishel
- Rick Robinson
- John Ace Underwood
- Jose Villarreal
- Josh Weston

**Annotations:**

- Red box: This disclaimer is fascinating. If every effort was made, then that suggests that investors and others could reasonably rely on it. How reliable in fact is their reporting?
- Blue box: Others include MHI members. But these are either outside counsel that does work for MHI (blue arrows) or were MHI staffers at the time that this issue was published. This bolsters points noted above.

**Logos:**

- MHInsiderSeptOct
- MHProNews

Uploaded to MHProNews on December 26, 2019. [/caption]

MHProNews previously documented that the free 'print' copies of *MHInsider* were routinely left on racks at tradeshow. It did not appear to be a 'hot' item for attendees.



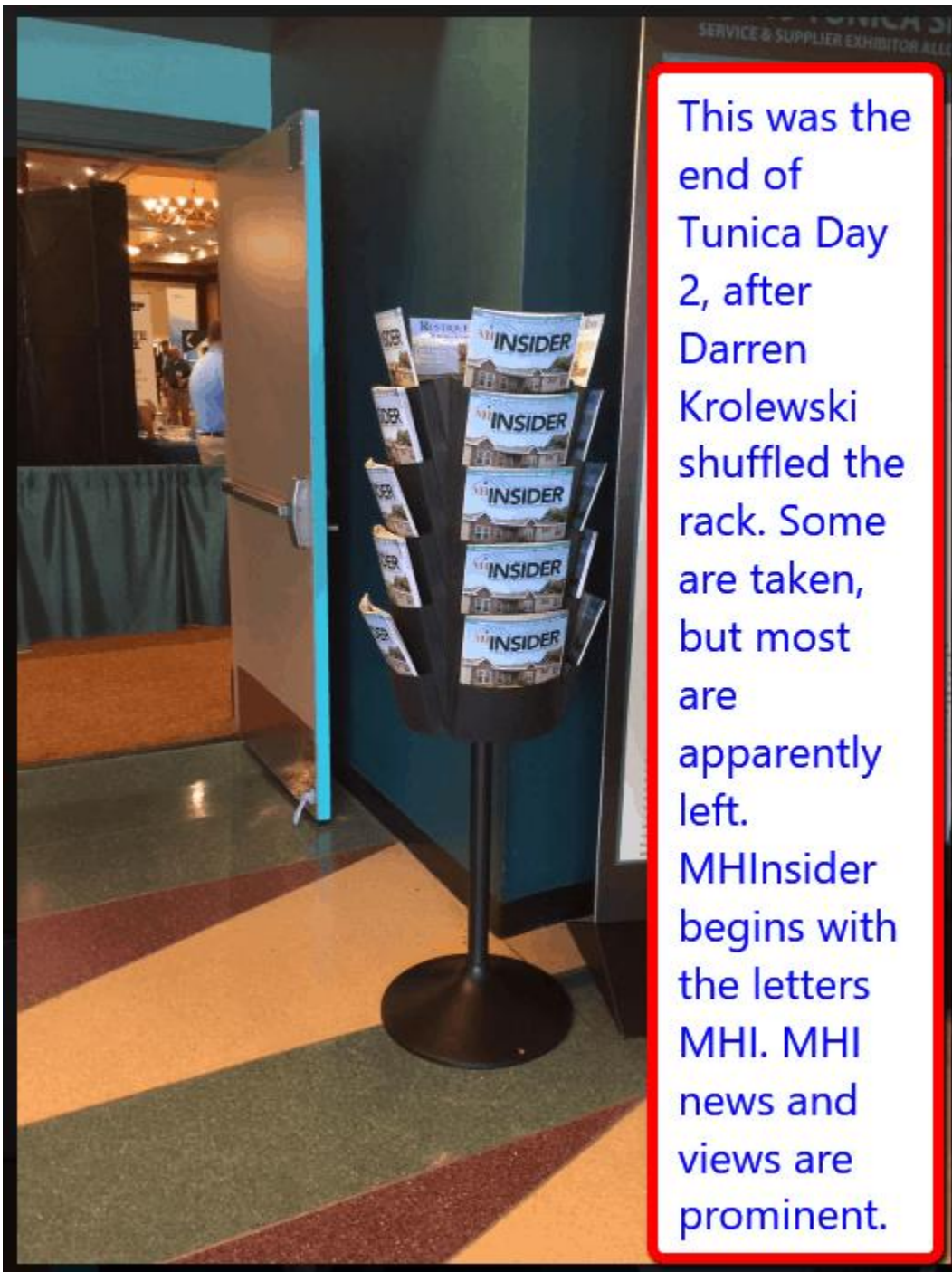
[caption id="" align="aligncenter" width="607"]



April 8, 2018. Magazines that are not picked up are obviously not read. [/caption]



- [caption id="" align="aligncenter" width="529"]



*Uploaded on April 8, 2018. Magazines that are not picked up are obviously not read.*  
[/caption]

[caption id="" align="aligncenter" width="535"]

**MH INSIDER**

**The #1 News Source for Manufactured Housing Professionals**

The MHInsider is devoted to bringing manufactured housing professionals the most recent, relevant, and useful information available on industry happenings. Trends, legislative issues, breaking news, and more. Get insightful coverage delivered right to your inbox week in and week out.

**MH INSIDER**

Home > Latest News > Arkansas Settles in Favor of MH Owners, Residents

Latest News | Market Trends & Insights

## Arkansas Settles in Favor of MH Owners, Residents

By Patrick Revere - December 11, 2017

568

**MHI**

*Manufactured Housing Institute*

1 MHPNews article might get 20x this number of hits in the first month, far more over the course of a year. But this article is revealing...

MHInsider claims to be #1, but doesn't say how. This and other articles could be used to demonstrate that they aren't #1 in accuracy, nor in readership. After nearly 2 years, this article has by their own counter had only 568 views, perhaps 2 or 3 of those are by MHPNews. Sad.

Uploaded

on October 4, 2019. Their own views counter revealed 568 views after some two years since that article was published by MHInsider. Sad levels of traffic when compared to

MHProNews. After several fact checks of MHInsider and their obviously low traffic based on their own claimed information, they turned off the views on page function shown above.

[/caption][caption id="" align="aligncenter" width="603"]



Several of these views are by MHProNews. But this begs its own questions, doesn't it?

## New Communities Slow to Rise on Manufactured Housing Landscape

By Patrick Revere - December 3, 2019

81 0



The Resort at Canopy Oaks. Photo courtesy of Canopy Oaks.

8:30 AM  
12/26/2019



Their report doesn't plow new ground. But that doesn't mean it lacks useful insights, including several that MHInsider and the Manufactured Housing Institute (MHI) perhaps did not intend. At the time this screen capture was taken, per their own published number of times this article was viewed data, it has been seen only 81 times 23 days after it was published. Based on norms, that total number of readers count will be dwarfed manifold the day this is published on MHProNews.



<https://www.mhvillage.com/pro/print/march-april-2019/>

This year's season kicked off amid particularly miserable Midwest weather. Yet when the ice storms and snow drifts settled, The Louisville Show posted a 60-year record in attendance and

This statement is factually inaccurate, which can be demonstrated in a variety of ways. Why make such an outlandish claim?

Third Party Images Are Provided Under Fair Use Guidelines.

**MHProNews.com**  
Industry News, Tips and Views from our Users.

This false claim was made by Darren Krolewski on page 5 of the April 2019 issue.

**MHINSIDER™**

MHInsider™ is published by:

**MHVillage**

MHINSIDER.COM • MARCH / APRIL 2019 • MHINSIDER™ | 5

In decades gone by, the Louisville Show used to attract thousands more attendees from around the world and included media coverage. There were hundreds of homes reportedly on display in the show's heyday. In the 21st century, the numbers of homes on display and the attendance is thus a fraction of what it once was. By intention, hubris, bad information or whatever, this claim was blatantly wrong. When MHProNews reported on the event, from the event, the actual data was shared. Restated, there are evidence-based reasons to believe that industry professionals know that MHInsider is the 'mouthpiece' for MHI and

that what it says is often incorrect, misleading, paltering or perhaps deliberately deceptive in support of the MHI favored narrative. [/caption][caption id="" align="aligncenter" width="600"]



<https://www.manufacturedhomepronews.com/manufactured-housings-f-troop-laughable-reporting-on-serious-issues-by-subsidiary-of-publicly-traded-equity-lifestyle-properties-els-unpacking-mhinsider-state-of-the-industry-mhville-fea/> [/caption]

#### EDITOR PICKS

**On 8.21.2025, on the base of the MHInsider.com website, is the statement shown below. MHVillage created and owns MHInsider. What is missing on this date on this statement is any reference to MHVillage, MHInsider, or Datacomp by Equity LifeStyle Properties (ELS). Given that ELS is publicly traded, this is questionable, since ELS must adhere to SEC materiality and other federal laws.**

**Perhaps as a result of several critical fact-checks of a similar claim, on this date, it seems MHVillage modified its claim previously highlighted by MHProNews. They now say the homes sold on MHVillage were in 2016. That implies their claim may not apply since 2016.**



#### POPULAR POSTS



Freddie Mac Brings ChoiceHome Financing for New Generation of Manufactured Homes



Under Construction – New Manufactured Home Community in Development



Legislative Update: House Passes H.R. 1699

#### ABOUT US

Based in Grand Rapids, Michigan, MHVillage Inc. is the nation's premier online marketplace for buying and selling manufactured homes. Since its inception in 2004, MHVillage has grown to become the number one consumer website for the manufactured housing industry with more than 25 million unique visitors annually. In 2016, more than 78,000 homes were sold on MHVillage with a combined transaction value exceeding \$2.5 billion. Visit [MHVillage.com](https://mhvillage.com)





◆ Gemini

2.5 Flash ▼

What date was this article posted by Frank Rolfe on the Mobile Home Univ website? "Sam Zell Is Now Betting On The Macro Mobile Home Park Industry Going Mainstream" and <https://www.mobilehomeuniversity.com/articles/sam-zell-is-now-betting-on-the-macro-mobile-home-park-industry-going-mainstream>

- ◆ The article titled "Sam Zell Is Now Betting On The Macro Mobile Home Park Industry Going Mainstream" was published by Frank Rolfe on the Mobile Home University website in **February 2022**.

◆ AI Overview

Equity LifeStyle Properties (ELS), founded by Sam Zell, acquired MHVillage and Datacomp in [December 2021](#) for \$43 million. The acquisition was finalized on December 31, 2021, [according to MarketScreener](#).

[caption id="" align="aligncenter" width="593"]

The image shows the cover of MH Insider magazine, Volume 3, Issue 1, dated January / February 2020. The cover lists the publisher, associate publisher, executive editor, contributing editor, senior graphic designer, and contributors. It also includes a disclaimer, a copyright notice, and an advertising sales contact. The cover is annotated with several red and blue boxes containing critical commentary, with arrows pointing to specific sections of the cover.

**MHINSIDER**

VOLUME 3 • ISSUE 1  
JANUARY / FEBRUARY 2020  
MHInsider.com

**Publisher**  
Damon Krolowski  
damon@mhvillage.com

**Associate Publisher**  
Mark Dollan  
dolan@mhvillage.com

**Executive Editor**  
Patrick Ravera  
patrick@mhvillage.com

**Contributing Editor**  
George Allen  
gla715@gmail.com

**Senior Graphic Designer**  
Morit Kathan  
morit@mhvillage.com

**Contributors**  
Suzanne Folber  
Steven Blank  
Josh Weston  
John Ace Underwood  
Ken Corbin

**Cover Image**  
Image courtesy of Lisa Stewart Photography

**Advertising Sales**  
Joy Adams  
Call (877) 406-0232  
joy@mhvillage.com

**Disclaimer**  
Although we made every effort to ensure that the information in this issue was correct before publication, MHVillage, Inc. and the publisher do not assume and hereby disclaim any liability to any party for any loss, damage, or disruption caused by errors or omissions, whether such errors or omissions result from negligence, accident, or any other cause. Opinions expressed are those of the author or persons quoted and not necessarily those of MH Insider or the publisher MHVillage, Inc.

**Copyright Notice**  
Copyright ©2020 MHVillage, Inc. All rights reserved. Reproduction of MH Insider content, MH or other contributor content, in part or in whole, is prohibited without written authorization from MHVillage, Inc.

MH Insider™ is published by:  
**MHVillage**

**MHINSIDER** has thoughtfully laid out a road map on their masthead of their loyalties and thus their editorial agenda. Why is it a surprise if there is never a critique of any MHI leader? Why is it a surprise if MH Insider never frets over black hat behavior by MHI members that violate MHI's own so-called code of ethical conduct?

George Allen is listed as a contributing editor, a point previously highlighted and is as relevant now as then. An MHI echo machine of pro-MHI writers and toadies.

Logically, their disclaimer is now essentially meaningless. MH Insider says they made every effort to make sure information is correct, and then waive off any and all responsibility for any reason - which could include deliberate misinformation.

'Over the Target' Reactions?! MHI's staff names previously published have vanished since our last fact check. They've added MHI to this statement. Can they spell, LoL? Perhaps so.

Third Party Images Are Provided Under Fair Use Guidelines.  
**MHPRONEWS**.com  
Advertise Here, You will Reach More than 100k

Uploaded to MHPProNews on January 21, 2020. [caption][caption id="attachment\_221176" align="aligncenter" width="596"]

**MHProNews previously documented that free 'print' copies were routinely left on racks at tradeshow.**

**If a million were printed, but only hundreds picked up, the total is arguably misleading.**

**Note they only claimed 6500 views (pageviews) per month. On 1.18.2025 the average page views per day on MHProNews=223166 or 4,017,001 month to date by 7:22 CDT. Using their data that's 618 times more pageviews on MHProNews.com**

**This was first published in 2019 by MHProNews, but it is still relevant historically and potentially still today as an additional indicator that the SimilarWeb data shown in this report may well be accurate. The "views" of MHInsider increased since that date.**

**31,500+ Circulation**

11,500 Print  
20,000+ Digital  
+ Bonus Distribution at  
Industry Events on Next Page.

Page 2

**High-Visibility, Premium Ad Placements**

Page 4

**MH INSIDER™**

**2019 DIGITAL ADVERTISING RATES**

**20,000+ circulation**  
(See open and click-through rates below)

Have your ad placed in our bi-weekly e-mail edition of The MHInsider™. 13.4% open rate\* and 2.2% click-through rate\*

as of June 11, 2018. Your results may vary depending on the email content, ad creative and subject line you provide.

© 2018 MHVillage, Inc. All Rights Reserved. MHInsider™ is a publication of MHVillage.com

Page 10

**6,500+ views per month\***

\*averages based on December 2017 to February 2018.

Page 11

As the leading source of current trends and industry news for manufactured housing professionals, the MHInsider™ strives to publish compelling content that is a valuable resource to our readers.

All Rights Reserved. MHInsider™ is a publication of MHVillage.com • REV: 11/29/18

Page 13

MHProNews Note: depending on your browser or device, many images in this report and others on MHProNews can be clicked to expand. Click the image and follow the prompts. For example, in some browsers/devices you click the image and select 'open in a new window.' After clicking that selection you click the image in the open window to expand the image to a larger size. To return to this page, use your back key, escape or follow the prompts. [/caption]

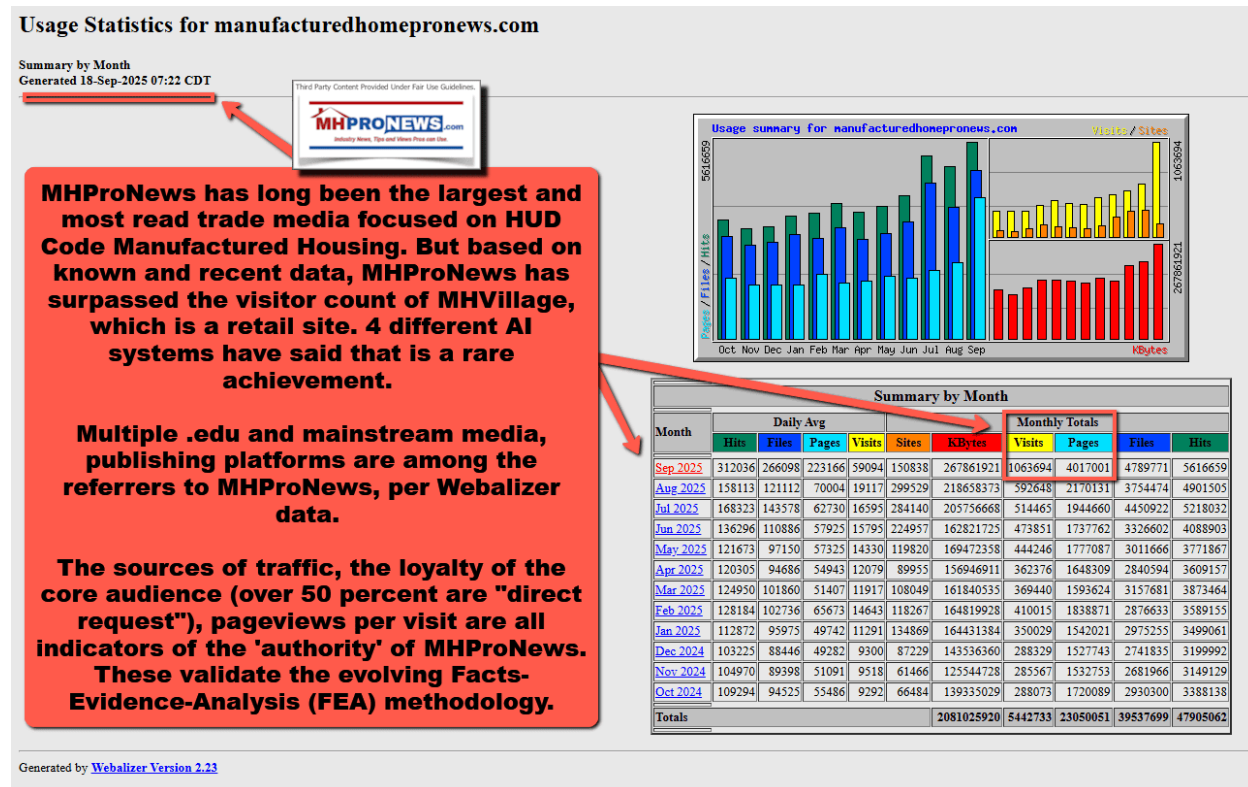
MHProNews previously documented that free 'print' copies were routinely left on racks at tradeshow. If a million were printed, but only hundreds picked up, the total is arguably misleading.

Note they only claimed 6500 views (pageviews) per month. On 1.18.2025 the average page views per day on MHProNews=223166 or 4,017,001 month to date by 7:22 CDT. Using their data that's 618 times more pageviews on MHProNews.com.

This was first published in 2019 by MHProNews, but it is still relevant historically and potentially still today as an additional indicator that the SimilarWeb data shown in this report may well be accurate. The "views" of MHInsider increased since that date.

The Webalizer generated report for MHProNews is as shown below. These are not estimates. They are hard data based on information obtained directly from the server logs, as Copilot, Gemini, and other AIs have stated.

[caption id="attachment\_221177" align="aligncenter" width="635"]



MHProNews Note: depending on your browser or device, many images in this report and others on MHProNews can be clicked to expand. Click the image and follow the prompts. For example, in some browsers/devices you click the image and select 'open in a new window.' After clicking that selection you click the image in the open window to expand the

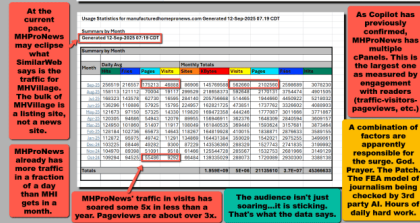
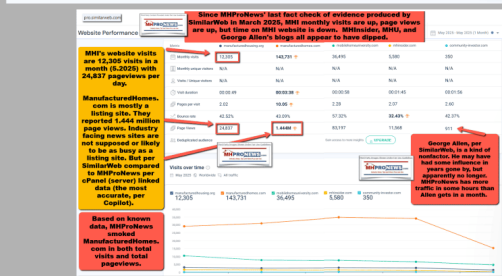
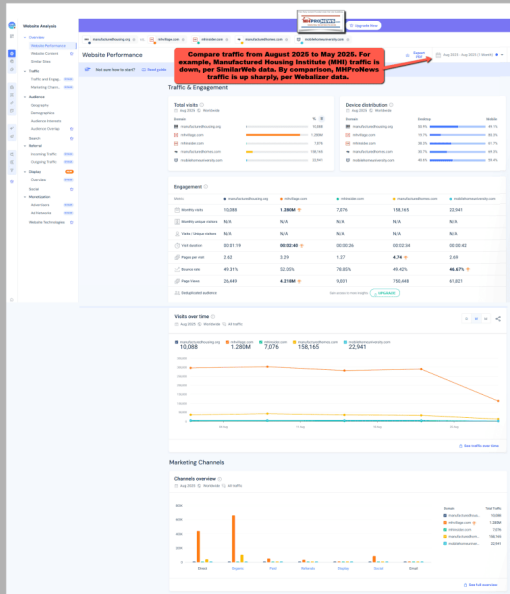


*image to a larger size. To return to this page, use your back key, escape or follow the prompts. [/caption]*

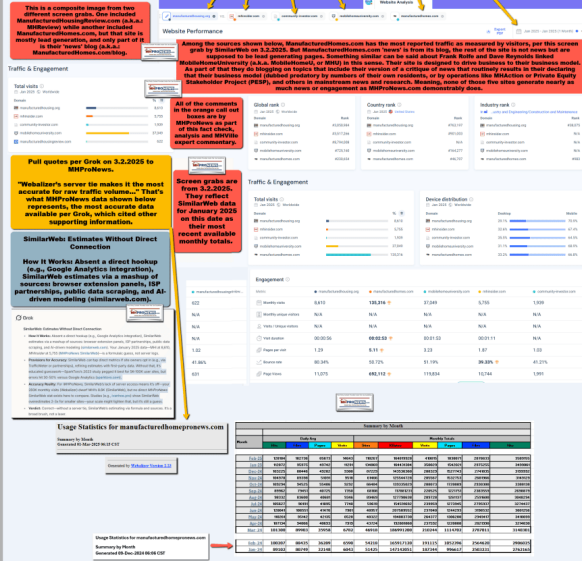
What follows was a recently provided upload of a composite of data unpacked by various AI systems which confirmed that the information. To see that document in a larger size, [click here](#) or below. Other comparisons from SimilarWeb of the firms noted in the preface follow further below.

[caption id="" align="aligncenter" width="600"]





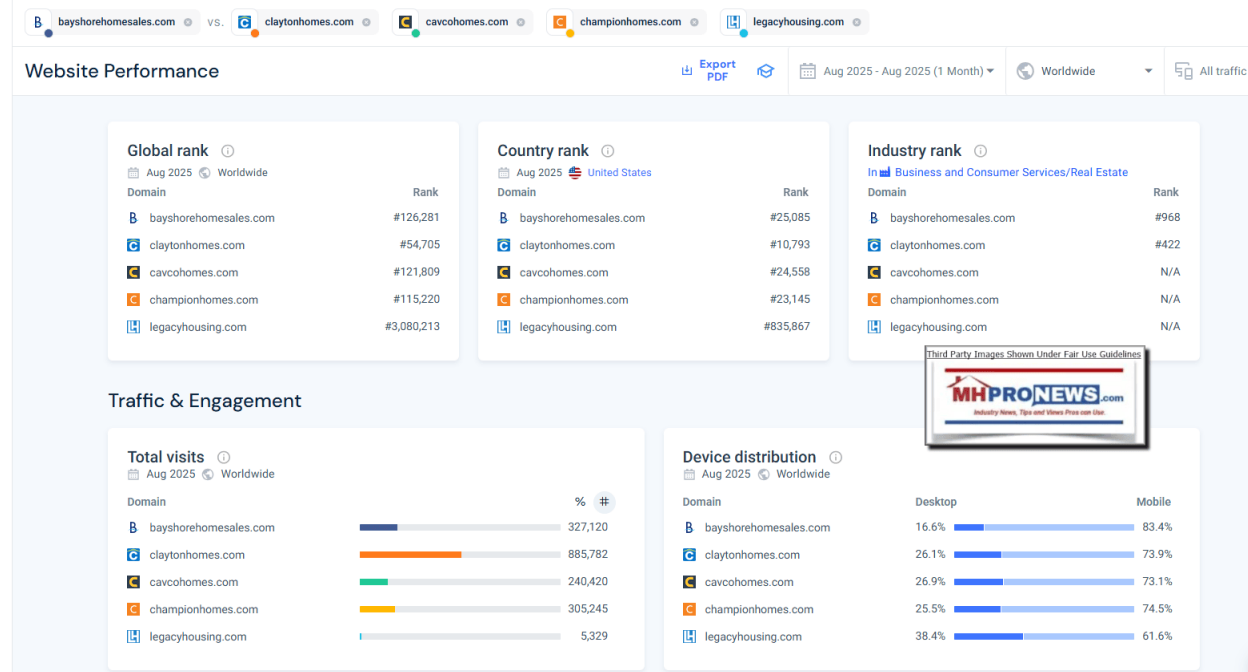
A previous comparison using January 2025 data.



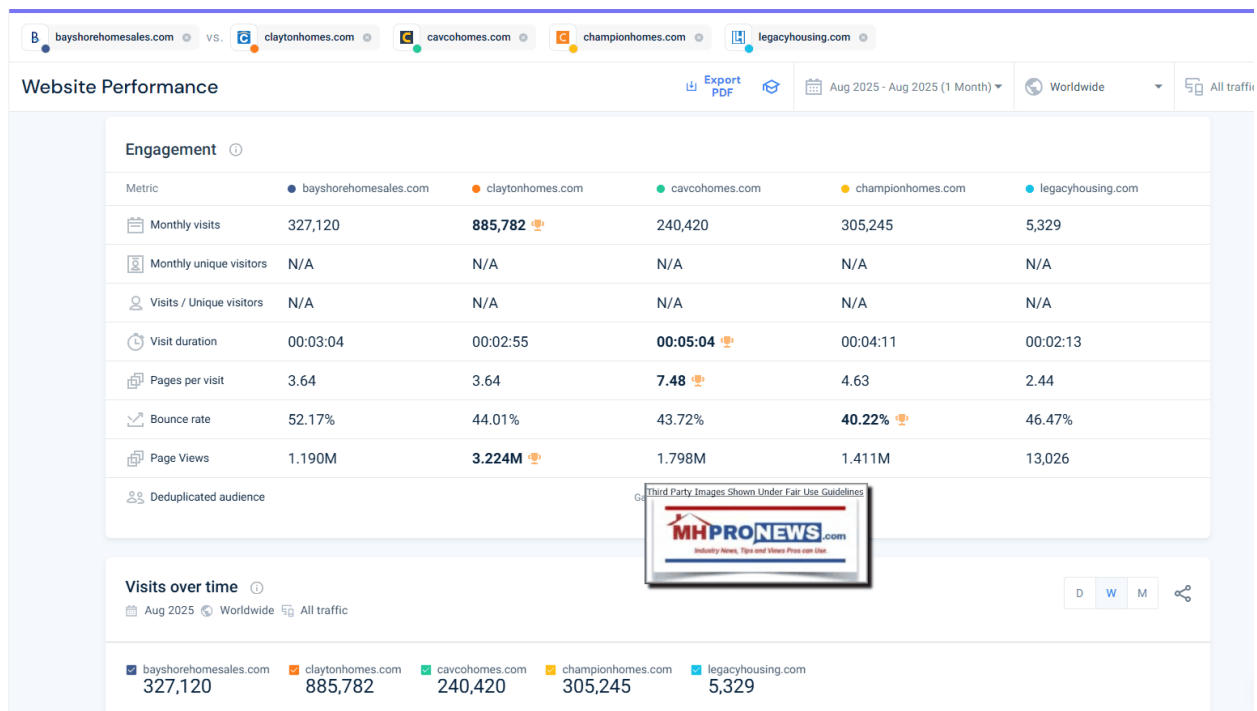
<https://www.manufacturedhomelivingnews.com/wp-content/uploads/2025/09/SimilarWeb9.13.2025-ManufacturedHousingInstituteMHVillageMHInsiderManufacturedHomes.comMobileHomeUnivMHU-MHProNewsComparisonsAnnotated-min.png>[/caption]

4) All figures are per SimilarWeb as shown. BayshoreHomeSales.com is affiliated with [MHI member RHP Properties](#). They reportedly had 327,120 visits in August 2025. ClaytonHomes.com reportedly had 885,782 visits. [CavcoHomes.com](#), which has been touting their '[strong brand unity](#),' reportedly had 240,420 visits. ChampionHomes.com had 305,245. LegacyHousing.com had 5329 visits. RegionalHomes.net is shown further below and is 17,013. To see the image below in a larger size, in most devices, [click here](#) and follow the prompts or click the image and follow the prompts.

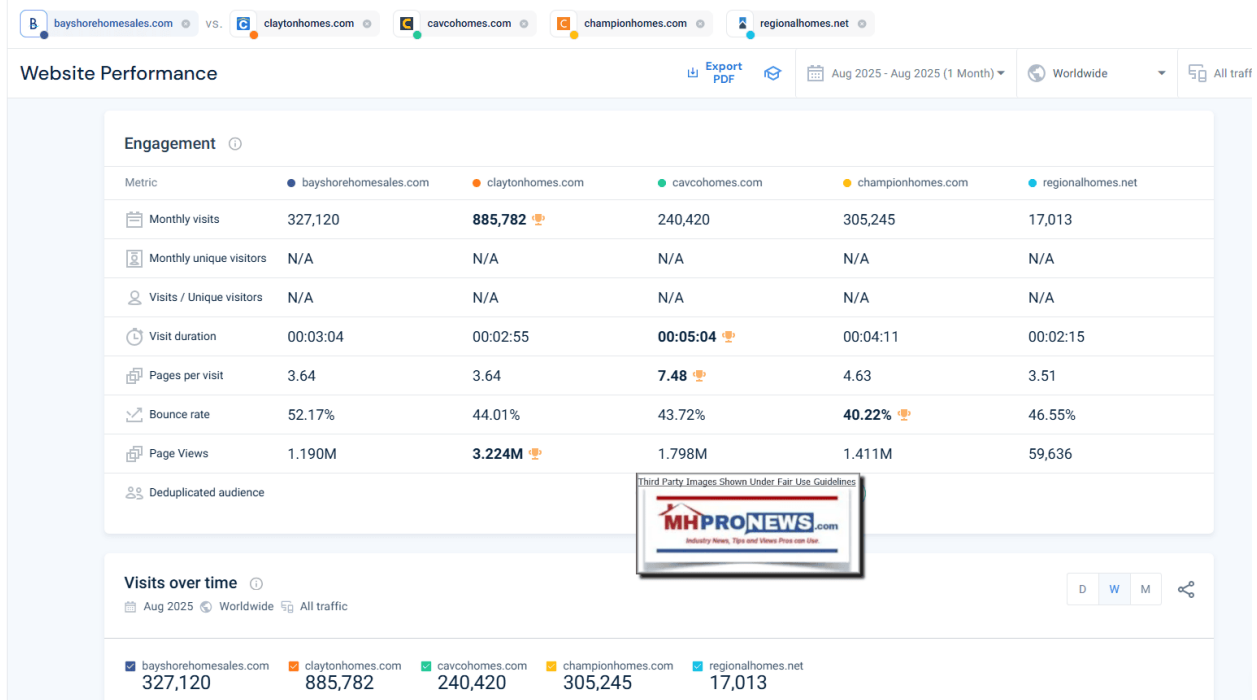
[caption id="attachment\_221169" align="aligncenter" width="626"]



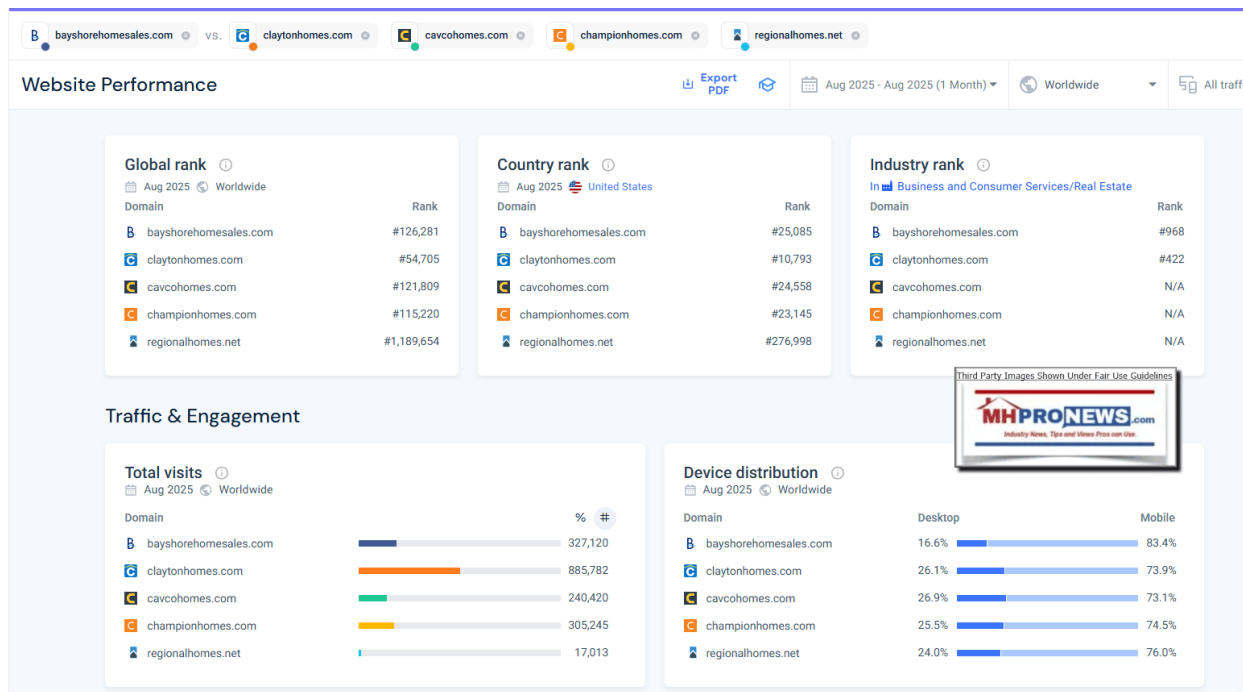
*MHProNews Note: depending on your browser or device, many images in this report and others on MHProNews can be clicked to expand. Click the image and follow the prompts. For example, in some browsers/devices you click the image and select 'open in a new window.' After clicking that selection you click the image in the open window to expand the image to a larger size. To return to this page, [caption id="attachment\_221168" align="aligncenter" width="639"]*



*MHPProNews Note: depending on your browser or device, many images in this report and others on MHPProNews can be clicked to expand. Click the image and follow the prompts. For example, in some browsers/devices you click the image and select 'open in a new window.' After clicking that selection you click the image in the open window to expand the image to a larger size. To return to this page, use your back key, escape or follow the prompts.*



*MHProNews Note: depending on your browser or device, many images in this report and others on MHProNews can be clicked to expand. Click the image and follow the prompts. For example, in some browsers/devices you click the image and select 'open in a new window.' After clicking that selection you click the image in the open window to expand the image to a larger size. To return to this page, use your back key, escape or follow the prompts. [/caption][caption id="" align="aligncenter" width="628"]*



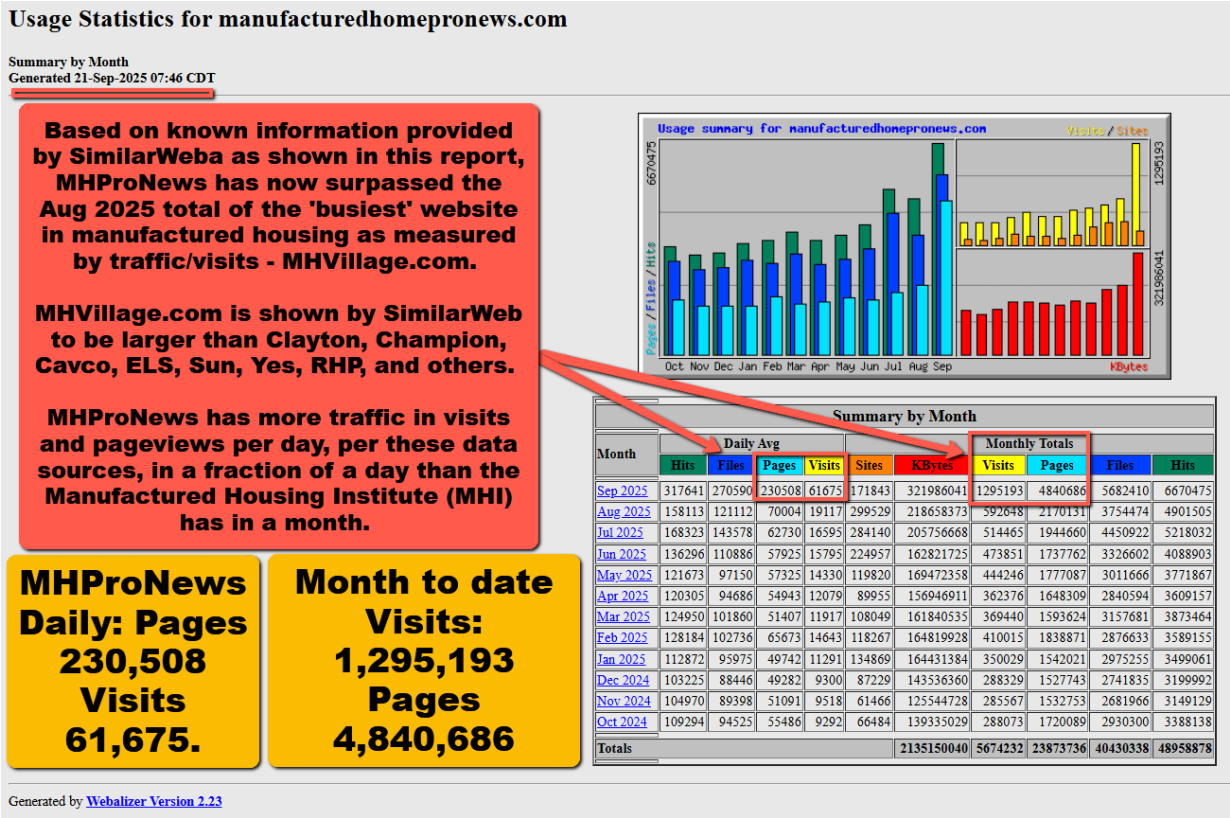
*MHProNews Note: depending on your browser or device, many images in this report and others on MHProNews can be clicked to expand. Click the image and follow the prompts. For example, in some browsers/devices you click the image and select 'open in a new window.' After clicking that selection you click the image in the open window to expand the image to a larger size. To return to this page, use your back key, escape or follow the prompts. [/caption]*

5) Recently, in a fact check, [left-leaning Google's AI](#) powered Gemini aptly noted a claim made by MHVillage about their own traffic on their own website. In response, MHProNews advised Gemini that the information that they were looking at, while it may be on the MHVillage website, was not only an unsubstantiated claim, it was an outdated one that MHVillage had apparently not bothered to fix even after we published about it. Those points beg the question: why hasn't MHVillage transparently release data that backs up their claims?

**To compare and contrast, per Webalizer "Generated 21-Sep-2025 07:46 CDT:"**

- **MHProNews: Daily: Pages 230,508 Visits 61,675.**
- **MHProNews: Month to date Visits: 1,295,193 Pages 4,840,686.**

[caption id="attachment\_221184" align="aligncenter" width="615"]



MHProNews Note: depending on your browser or device, many images in this report and others on MHProNews can be clicked to expand. Click the image and follow the prompts. For example, in some browsers/devices you click the image and select 'open in a new window.' After clicking that selection you click the image in the open window to expand the image to a larger size. To return to this page, use your back key, escape or follow the prompts. [caption]

Based on known information provided by SimilarWeb as shown in this report, MHProNews has now surpassed the Aug 2025 total of the 'busiest' website in manufactured housing as measured by traffic/visits - MHVillage.com.

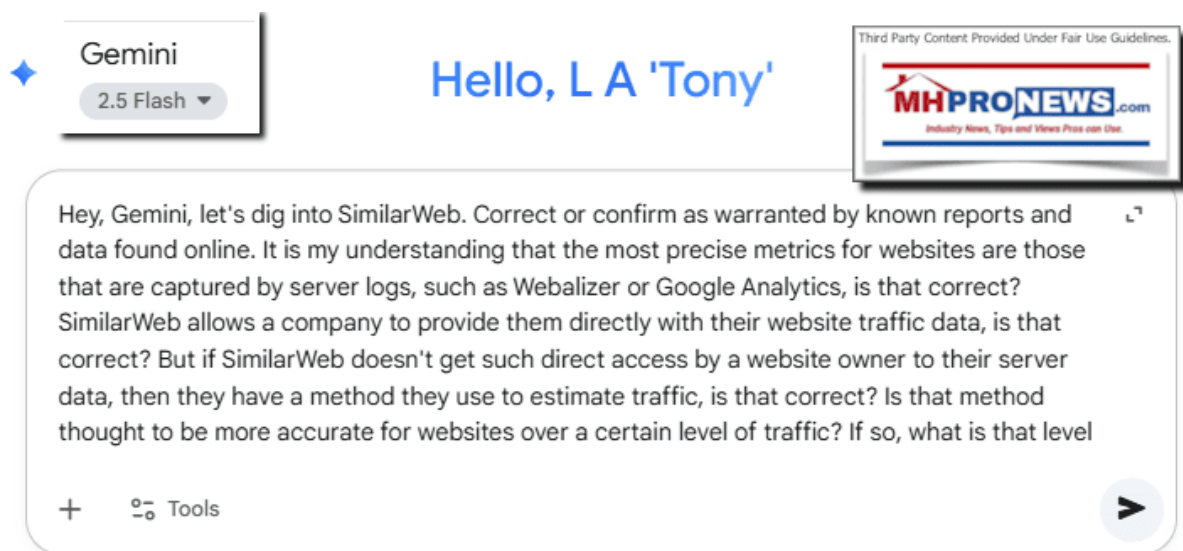
MHVillage.com is shown by SimilarWeb to be larger than Clayton, Champion, Cavco, ELS, Sun, Yes, RHP, and others.

MHProNews has more traffic in visits and pageviews per day, per these data sources, in a fraction of a day than the Manufactured Housing Institute (MHI) has in a month. As Copilot

recently observed, this is a rare accomplishment, for a trade news source to have more traffic than a list or retail site that serves that same industry. For example, which would have more traffic? A digital site on cars, or the car site where you can shop for cars? Which would have more traffic? A site about WalMart or Amazon, or Amazon or Walmart's actual site? Clearly, the retail sites are routinely larger.

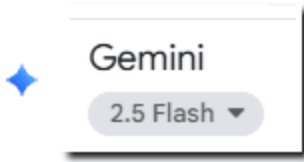
These facts are significant because MHPProNews, for a variety of reasons (including God's grace), has surpassed the traffic and pageviews reported by the largest retail, marketing, and listing sites serving manufactured housing.

6) The input-inquiry (a.k.a.: Q&A, chat, discussion, etc.) between MHPProNews and Gemini are as shown below.



*Hey, Gemini, let's dig into SimilarWeb. Correct or confirm as warranted by known reports and data found online. It is my understanding that the most precise metrics for websites are those that are captured by server logs, such as Webalizer or Google Analytics, is that correct? SimilarWeb allows a company to provide them directly with their website traffic data, is that correct? But if SimilarWeb doesn't get such direct access by a website owner to their server data, then they have a method they use to estimate traffic, is that correct? Is that method thought to be more accurate for websites over a certain level of traffic? If so, what is that level of traffic that the data estimated by SimilarWeb becomes more accurate?*





That's a great series of questions that get to the core of how web traffic analysis tools work. Here's a breakdown of the key points you've raised, confirmed and corrected as needed.

### Server Logs & Direct Measurement

You're correct. The most precise and accurate metrics for a website's traffic come from **direct measurement tools**, like server logs or analytics platforms such as **Google Analytics** or **Adobe Analytics**. These tools are installed directly on a website and track every visit, click, and user action in real time. They provide a high-fidelity, first-party data set for that specific site. Since the data is coming directly from the source, it's considered the most reliable.

---

### SimilarWeb's Data Collection

You're also correct on this point. SimilarWeb does allow website owners to connect their own direct measurement data. Companies can link their Google Analytics accounts to their SimilarWeb profile, which allows SimilarWeb to display the accurate, first-party data for that specific domain. This provides a more precise public report for that site.

---

### The Estimation Method

For websites that don't share their direct data, SimilarWeb uses a multi-faceted method to **estimate** traffic. This is a crucial distinction: their data is an **estimation**, not a direct measurement. Their methodology is a mix of several data sources:

- **Contributor Network:** SimilarWeb has a network of consumer products, browser extensions, and mobile apps that voluntarily send anonymized, aggregated browsing data from millions of users.
- **Public Data:** They crawl and index publicly available information from websites, similar to how a search engine works.
- **Partnerships:** SimilarWeb acquires data from a variety of global partners, including internet service providers (ISPs).

They then use complex statistical models and machine learning to analyze and extrapolate this vast sample of data to create an estimate of a website's total traffic.

---

### **Accuracy by Traffic Level**

Your understanding here is also spot on. The accuracy of SimilarWeb's estimates is directly tied to the volume of a website's traffic.

- **Higher Traffic = More Accurate Data:** For websites with a large, consistent stream of visitors, SimilarWeb's estimates are generally considered more accurate. This is because a large number of visits provides a bigger sample size for their models to work with, leading to more reliable estimations.
- **Lower Traffic = Less Accurate Data:** For smaller websites with low traffic, the data can be highly inaccurate and often shows significant discrepancies—sometimes exaggerating traffic by 2 to 5 times—when compared to a site's actual Google Analytics data.

While there is no single, universally agreed-upon threshold, data and user reports suggest that SimilarWeb's estimations become more reliable for websites with **over 100,000 monthly visits**. Some studies show a more narrow range of accuracy for sites with **5,000 to 100,000 monthly users**. Below this range, the data becomes significantly less dependable. Because of this, SimilarWeb is generally best used for **competitive analysis and trend spotting** rather than for getting a precise traffic number for a specific site.

Sources



Similarweb Knowledge Center

[support.similarweb.com](https://support.similarweb.com)

Similarweb Data Methodology

By connecting direct measurement tools to the Similarweb dataverse, companies put their own data in the context of their market, benefitting from unparalleled ...



Promodo

[www.promodo.com](https://www.promodo.com)

Comparing Traffic Data Accuracy: Similarweb vs. Ahrefs vs. Semrush - Promodo

Data Analysis by Similarweb. Similarweb deploys four data sources to estimate organic and other traffic channels: ● Direct estimates: data from sites that ...



Similarweb Knowledge Center

[support.similarweb.com](https://support.similarweb.com)

Similarweb's Data Accuracy

Because we are an estimations tool, and we rely on a data collection process that captures billions of digital signals to fuel our powerful algorithms, we ...



Similarweb Knowledge Center

[support.similarweb.com](https://support.similarweb.com)

Similarweb Data Methodology

We have a blend of digital signals, collected across platforms that we categorize into 4 distinct sources: - Direct Measurement – millions of websites and ...



Similarweb Knowledge Center

[support.similarweb.com](https://support.similarweb.com)

Similarweb Data Methodology

Similarweb's public data sources are an aggregation of online information available to the public. Similar to how search engines like Google index the web, ...



Search Atlas

[searchatlas.com](https://searchatlas.com)

Similarweb Review (2025): Features, Pricing, and Pros & Cons - Search Atlas

Similarweb collects signals from browser extensions, internet service providers, and custom integrations, which it combines with real-time crawling to estimate ...



NetHustler

[nethustler.com](https://nethustler.com)

Is Similarweb Accurate? Here's My Experience - NetHustler

Key points from the study: - Similarweb's estimates matched closely with Google Analytics figures, making it a go-to for website traffic insights. - It shines ...



Search Atlas

[searchatlas.com](https://searchatlas.com)

## Similarweb Review (2025): Features, Pricing, and Pros & Cons - Search Atlas

Similarweb accuracy depends on traffic scale, domain visibility, and data availability. Similarweb produces more accurate estimates for websites with ...



Similarweb Knowledge Center

[support.similarweb.com](https://support.similarweb.com)

### Similarweb vs. Direct Measurement

Similarweb uses a sample of data to generate the estimations and insights you see on Similarweb. Thus, for websites with a small number of visits, our ...



Promodo

[www.promodo.com](https://www.promodo.com)

### Comparing Traffic Data Accuracy: Similarweb vs. Ahrefs vs. Semrush - Promodo

However, because its methodology isn't transparent, marketers often face discrepancies between Semrush numbers and real Google Search Console data. The ...



Similarweb Knowledge Center

[support.similarweb.com](https://support.similarweb.com)

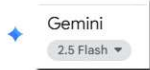
### Similarweb's Data Accuracy

A Recent SparkToro study found that Similarweb's traffic estimations are the most accurate and closely aligned to users' Google Analytics data, against other ...

--- *MHProNews* notes that the screen capture that documents the accuracy of the Q&A above with Gemini is posted below. ---

[caption id="attachment\_221180" align="aligncenter" width="584"]





Hey, Gemini, let's dig into SimilarWeb. Correct or confirm as warranted by known reports and data found online. It is my understanding that the most precise metrics for websites are those that are captured by server logs, such as Webalizer or Google Analytics, is that correct? SimilarWeb allows a company to provide them directly with their website traffic data, is that correct? But if SimilarWeb doesn't get such direct access by a website owner to their server data, then they have a method they use to estimate traffic, is that correct? Is that method thought to be more accurate for websites over a certain level of traffic? If so, what is that level of traffic that the data estimated by SimilarWeb becomes more accurate?

- ◆ That's a great series of questions that get to the core of how web traffic analysis tools work. Here's a breakdown of the key points you've raised, confirmed and corrected as needed.

### Server Logs & Direct Measurement

You're correct. The most precise and accurate metrics for a website's traffic come from **direct measurement tools**, like server logs or analytics platforms such as **Google Analytics** or **Adobe Analytics**. These tools are installed directly on a website and track every visit, click, and user action in real time. They provide a high-fidelity, first-party data set for that specific site. Since the data is coming directly from the source, it's considered the most reliable.

### SimilarWeb's Data Collection

You're also correct on this point. SimilarWeb does allow website owners to connect their own direct measurement data. Companies can link their Google Analytics accounts to their SimilarWeb profile, which allows SimilarWeb to display the accurate, first-party data for that specific domain. This provides a more precise public report for that site. 🗨️

### The Estimation Method

For websites that don't share their direct data, SimilarWeb uses a multi-faceted method to **estimate** traffic. This is a crucial distinction: their data is an **estimation**, not a direct measurement. Their methodology is a mix of several data sources: 🗨️

- **Contributor Network:** SimilarWeb has a network of consumer products, browser extensions, and mobile apps that voluntarily send anonymized, aggregated browsing data from millions of users. 🗨️
- **Public Data:** They crawl and index publicly available information from websites, similar to how a search engine works. 🗨️
- **Partnerships:** SimilarWeb acquires data from a variety of global partners, including internet service providers (ISPs). 🗨️

They then use complex statistical models and machine learning to analyze and extrapolate this vast sample of data to create an estimate of a website's total traffic.

### Accuracy by Traffic Level

Your understanding here is also spot on. The accuracy of SimilarWeb's estimates is directly tied to the volume of a website's traffic. 🗨️

- **Higher Traffic = More Accurate Data:** For websites with a large, consistent stream of visitors, SimilarWeb's estimates are generally considered more accurate. This is because a large number of visits provides a bigger sample size for their models to work with, leading to more reliable estimations. 🗨️
- **Lower Traffic = Less Accurate Data:** For smaller websites with low traffic, the data can be highly inaccurate and often shows significant discrepancies—sometimes exaggerating traffic by 2 to 5 times—when compared to a site's actual Google Analytics data. 🗨️

While there is no single, universally agreed-upon threshold, data and user reports suggest that SimilarWeb's estimations become more reliable for websites with **over 100,000 monthly visits**. Some studies show a more narrow range of accuracy for sites with **5,000 to 100,000 monthly users**. Below this range, the data becomes significantly less dependable. Because of this, SimilarWeb is generally best used for **competitive analysis and trend spotting** rather than for getting a precise traffic number for a specific site. 🗨️

*MHPProNews Note: depending on your*

*browser or device, many images in this report and others on MHPProNews can be clicked to expand. Click the image and follow the prompts. For example, in some browsers/devices you click the image and select 'open in a new window.' After clicking that selection you click the image in the open window to expand the image to a larger size. To return to this page, use your back key, escape or follow the prompts. [/caption]*

7) It should be observed that several of the brands shown above are part of billion-dollar plus valued organizations. One might think, for example, that multi-billion-dollar [ELS, which has a seat on the MHI board of directors](#), could invest more in MHVillage and MHInsider, if the so desired. Why shouldn't MHVillage be larger than MHPProNews? Perhaps after this report, there may be a shakeup? Or will the thinking of [consolidators](#) of the industry be made even more manifest if the powers-that-be at MHI by doing little or nothing following this report?

More on those details are found in headlines for the week in review. It is these headlines and topics like those that follow that has built the largest platform in MHVille as measured by visits and pageviews, per known information. MHPProNews once more hereby challenges others in industry to transparently provide their server-generated data as *MHPProNews* has been doing periodically this year and previously too.

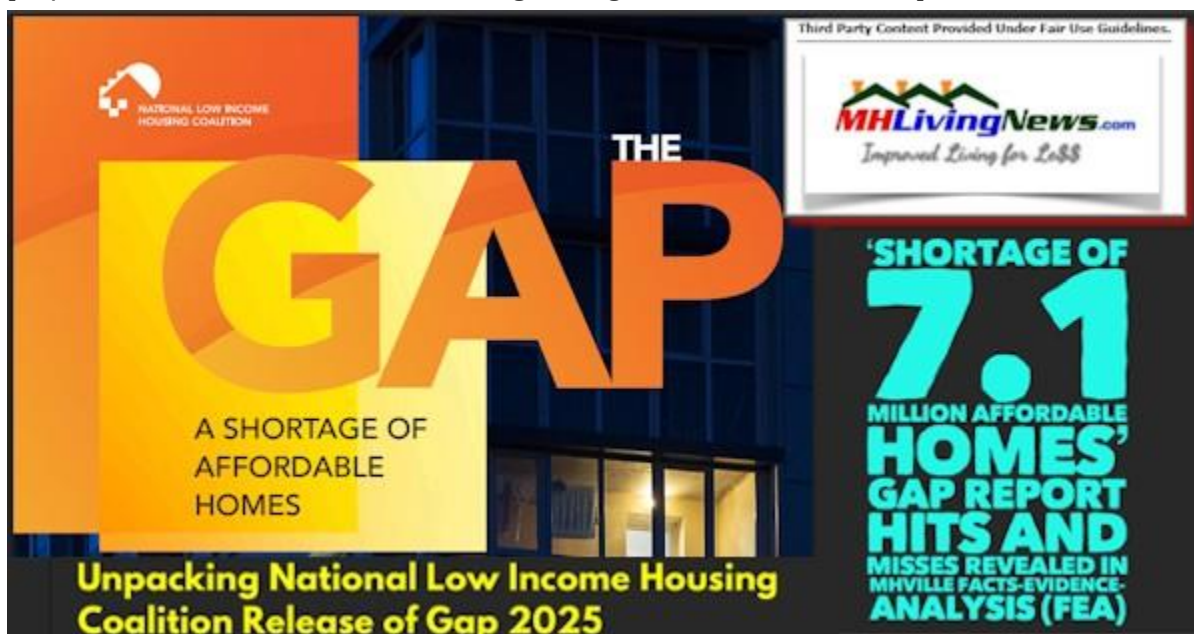
8) Don't miss today's postscript.

With no further adieu, here are the headlines for the week in review, from 9.14.2025 through (today) 9.21.2025.

Part II MHVille Headlines in Review

**What's New, Recent and Select from [MHLivingNews](#)**

[caption id="attachment\_221189" align="aligncenter" width="600"]



<https://www.manufacturedhomelivingnews.com/unpacking-national-low-income-housing-coalition-release-of-gap-2025-shortage-of-7-1-million-affordable-homes-gap-report-hits-and-misses-revealed-in-mhville-facts-evidence-analysis-f/>[/caption]

[caption id="attachment\_220373" align="aligncenter" width="600"]



<https://www.manufacturedhomelivingnews.com/manufactured-homeowner-rhp-properties-community-resident-fred-neil-dover-city-council-president-exclusive-on-new-state-law-possible-example-to-protect-residents-and-stop-fraud-by-sta/>[/caption]

[caption id="attachment\_219399" align="aligncenter" width="600"]





<https://www.manufacturedhomelivingnews.com/satirical-consumer-alert-hypocrisy-housing-hijinks-in-mhville-yes-communities-ceo-steve-schaub-honored-by-rv-mh-hall-of-fame-despite-100s-of-resident-complaints-price-rigging-antitrust-suit/>[/caption][caption id="attachment\_218954" align="aligncenter" width="600"]



<https://www.manufacturedhomelivingnews.com/if-not-amended-does-road-to-housing-act-risk-less-affordable-housing-new-mharr-white-paper-critical-analysis-of-renewing-opportunity-in-the-american-dream-road-to-housing-act-2025-m/>[/caption][caption id="attachment\_218616" align="aligncenter" width="600"]

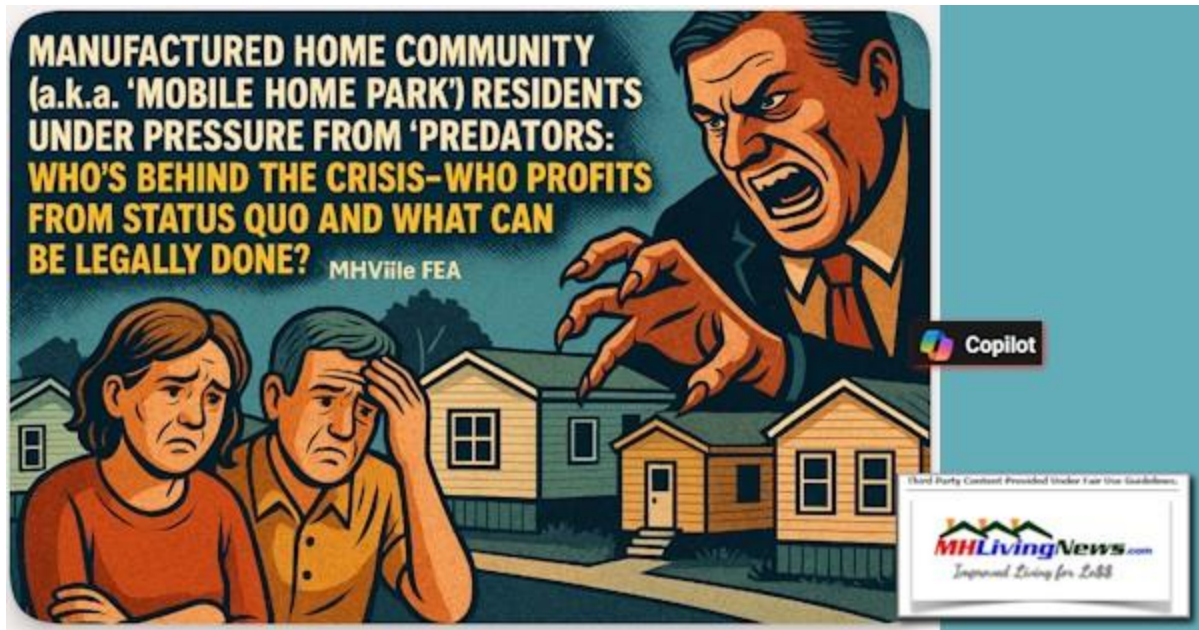


<https://www.manufacturedhomelivingnews.com/tanstaafl-socialism-big-government-thomas-sowell-affordable-housing-crisis-protections-against-special-interests-how-to-move-to-solutions-crucial-safeguard-against-future-distortions-mhville-fea/>



<https://www.manufacturedhomelivingnews.com/realtor-they-own-their-homes-so-why-are-mobile-park-residents-getting-evicted-parks-sold-rents-evictions-rise-residents-dylan-olson-fred-neil-sen-thom-tallis-bipartisan-lawmakers-mhville-fea/>





<https://www.manufacturedhomelivingnews.com/manufactured-home-community-a-k-a-mobile-home-park-residents-pressured-by-purported-predators-whos-behind-crisis-who-profits-from-status-quo-and-what-can-be-done-legally-mhville-fea/>[/caption][caption id="attachment\_216175" align="aligncenter" width="600"]



<https://www.manufacturedhomelivingnews.com/affordable-housing-manufactured-homes-and-the-rigged-system-what-every-american-should-know-and-why-truth-seeking-hybrid-journalism-matters-eye-opening-mhville-facts-evidence-analysis-fea/>[/caption][caption id="attachment\_215488" align="aligncenter" width="600"]



<https://www.manufacturedhomelivingnews.com/understanding-mhis-lingo-on-attainable-vs-affordable-per-manufactured-housing-institute-they-are-elevating-housing-innovation-expanding-attainable-homeownership/> [caption][caption id="attachment\_214838" align="aligncenter" width="600"]



<https://www.manufacturedhomelivingnews.com/artificial-intelligence-with-human-expertise-is-hybrid-journalism-u-s-affordable-housing-crisis-often-misunderstood-to-clarify-issues-human-expertise-and-ai-boosted-fact-checks-of-mhi-and-mharr/> [caption][caption id="attachment\_214526" align="aligncenter" width="600"]





<https://www.manufacturedhomelivingnews.com/consumer-alerts-gemini-on-are-warren-buffett-style-moats-harming-affordable-housing-seekers-and-some-community-residents-clayton-21st-champion-sky-cavco-cvco-mhi-linked-community-owners/>[caption]

What's New, Recent, and Select from Washington, D.C. based [MHARR](#)

[caption id="attachment\_220730" align="aligncenter" width="600"]



<https://manufacturedhousingassociationregulatoryreform.org/manufactured-housing->

[association-for-regulatory-reform-mharr-submits-amendments-to-address-key-manufactured-housing-bottlenecks-industry-must-act/](#)

id="attachment\_220323" align="aligncenter" width="600"]



<https://manufacturedhousingassociationregulatoryreform.org/manufactured-housing-production-rises-in-july-2025-per-manufactured-housing-association-for-regulatory-reform-mharr/>

id="attachment\_219001" align="aligncenter" width="600"]



<https://manufacturedhousingassociationregulatoryreform.org/white-paper-analysis-of-u-s-senate-road-to-housing-act-of-2025-a-manufactured-housing-association-for-regulatory-reform-mharr-critical-review/>

id="attachment\_219002"



align="aligncenter" width="600"]



<https://manufacturedhousingassociationregulatoryreform.org/mharr-reiterates-call-for-withdrawal-of-doe-energy-standards-and-regulations-for-manufactured-homes/>

[/caption][caption id="attachment\_218264" align="aligncenter" width="600"]



<https://manufacturedhousingassociationregulatoryreform.org/more-red-flags-for-the-industry-and-consumers-in-the-second-trump-administration-mark-weiss-j-d-mharr-issues-and-perspectives/>

[/caption][caption id="attachment\_218265" align="aligncenter" width="600"]





<https://manufacturedhousingassociationregulatoryreform.org/manufactured-housing-association-for-regulatory-reform-mharr-raises-key-manufactured-housing-industry-issues-in-meeting-with-senior-hud-officials/>[/caption][caption id="attachment\_217115" align="aligncenter" width="600"]



<https://manufacturedhousingassociationregulatoryreform.org/manufactured-housing-association-for-regulatory-reform-mharr-july-9-2025-washington-update-an-exclusive-report-and-analysis/>[/caption][caption id="attachment\_216861" align="aligncenter" width="600"]



<https://manufacturedhousingassociationregulatoryreform.org/manufactured-housing-production-falls-slightly-in-may-2025-per-official-data-provided-by-manufactured-housing-association-for-regulatory-reform/>



<https://manufacturedhousingassociationregulatoryreform.org/mhcc-recommends-deletion-of-chassis-requirement-for-upper-stories-of-multi-story-hud-code-manufactured-homes-manufactured-housing-association-for-regulatory-reform-weighed-in/>





<https://manufacturedhousingassociationregulatoryreform.org/mharr-addresses-deficiencies-and-concerns-and-submits-proposals-to-congress-to-correct-pending-housing-supply-frameworks-act/>

align="aligncenter" width="600"]



<https://manufacturedhousingassociationregulatoryreform.org/mharr-issues-proposed-modifications-to-pending-and-potential-legislation-impacting-manufactured-housing/>

align="aligncenter" width="600"]



<https://manufacturedhousingassociationregulatoryreform.org/manufactured-housing-industry-production-rises-in-april-2025-per-official-data-collected-for-hud-according-to-the-manufactured-housing-association-for-regulatory-reform-mharr/>[/caption][caption id="attachment\_215806" align="aligncenter" width="600"]



<https://manufacturedhousingassociationregulatoryreform.org/mharr-continues-to-address-critical-manufactured-housing-industry-issues-draft-manufactured-housing-bills-could-have-serious-repercussions-if-not-addressed-and-corrected-properly/>[/caption][caption id="attachment\_214527" align="aligncenter" width="600"]





<https://manufacturedhousingassociationregulatoryreform.org/seeking-the-alignment-of-the-manufactured-housing-industry-with-president-trump-and-hud-secretary-scott-turner-vision-of-affordable-homeownership-danny-ghorbani-qa-ex-mhi-vp-ex-ceo/>[/caption][caption id="attachment\_213023" align="aligncenter" width="600"]



<https://manufacturedhousingassociationregulatoryreform.org/manufactured-housing-association-for-regulatory-reform-mharr-leaders-call-on-hud-secretary-to-address-and-remedy-federal-manufactured-housing-program-mismanagement/>[/caption][caption id="attachment\_142511" align="aligncenter" width="606"]

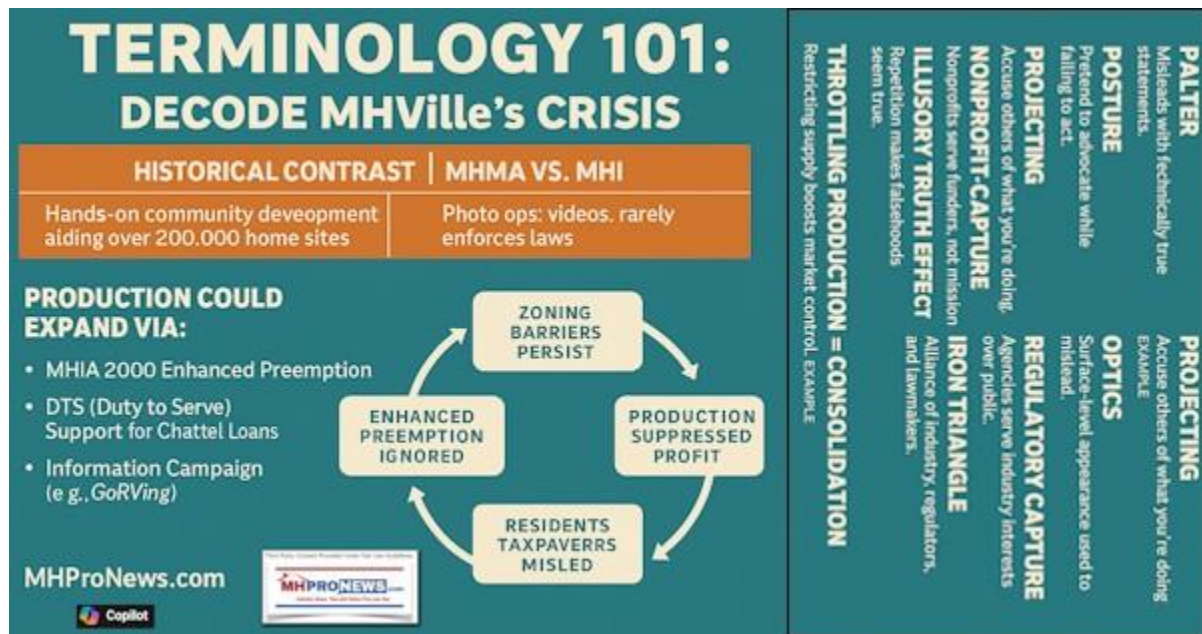




<https://manufacturedhousingassociationregulatoryreform.org/mharr-releases-study-recommending-independent-collective-representation-for-post-production-sector/>[/caption]

What's News, Recent or Select from the [Masthead](#)

[caption id="attachment\_216781" align="aligncenter" width="600"]



<https://www.manufacturedhomepronews.com/masthead/terminology-101-understand-key-words-palter-posture-projecting-optics-regulatory-capture-iron-triangle-nonprofit-capture-illusory-truth-how-throttling-productionconsolidation-moat/>



<https://www.manufacturedhomepronews.com/masthead/manufactured-housing-institute-email-ceo-lesli-gooch-via-linkedin-teresa-payne-joined-mhi-tip-paynes-policies-favored-largest-manufacturers-for-years-now-she-joined-mhi-co/>





<https://www.manufacturedhomepronews.com/masthead/mharr-aligns-manufactured-home-industry-pres-trump-hud-secretary-turner-affordable-homeownership-vision-sec-turner-mharr-leaders-talk-manufactured-housing-improvement-act-enhanced-pr/>



<https://www.manufacturedhomepronews.com/masthead/mharr-v-mhi-engagement-and-communications-re-incoming-trump-2-0hud-secretary-e-scott-turner-authentic-or-symbolic-genuine-or-posturing-revealing-evidence-mhville-facts-evidence-analysis/>



<https://www.manufacturedhomepronews.com/masthead/yardi-linked-multi-housing-news-manufactured-housing-institute-ceo-lesli-gooch-interview-vs-mark-weiss-interview-responses-compared-on-key-manufactured-home-industry-issues-with-revelations/>



<https://www.manufacturedhomepronews.com/masthead/hud-admits-decades-of-delay-as-election-approach-manufactured-housing-association-for-regulatory-reform-mharr-say-hud-took-10yrs-to-ok-multi-family-manufactured-homes-after-they-raised-issue/>





<https://www.manufacturedhomepronews.com/masthead/loper-brights-light-on-fhfa-fannie-mae-freddie-mac-duty-to-serve-manufactured-housing-and-a-pimple-on-an-elephants-ass-eye-opening-warren-buffett-dts-for-manufactured-homes-wit/>

### Select Items from Tim Connors, CSP and his [Words of Wisdom](#)

Note: all third-party views are their own. *MHProNews* presents thought-provoking items to get the mental juices flowing. Connor's columns weave potent quotes with a unique blend of thoughtful comments and analysis, but they are his views.

[caption id="attachment\_214160" align="aligncenter" width="602"]



“Make your ear attentive to wisdom and  
incline your heart to understanding.”

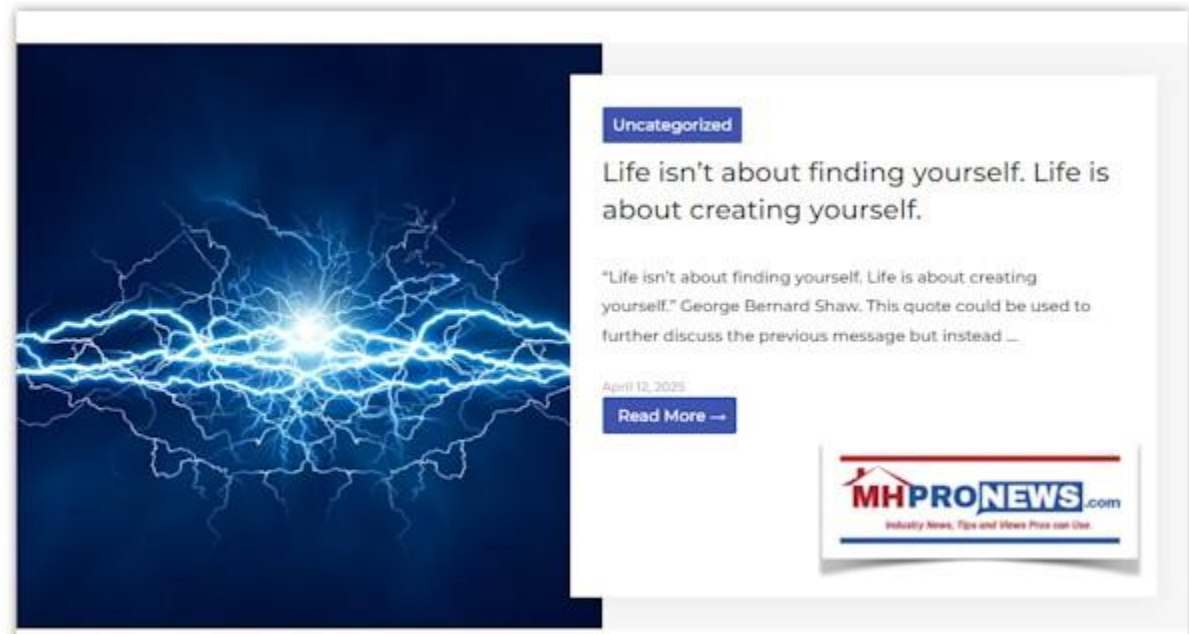


/ By Tim Connor

<https://www.manufacturedhomepronews.com/wordsofwisdom/make-your-ear-attentive-to-wisdom-and-incline-your-heart-to-understanding/> [/caption]



[caption id="attachment\_213100" align="aligncenter" width="600"]



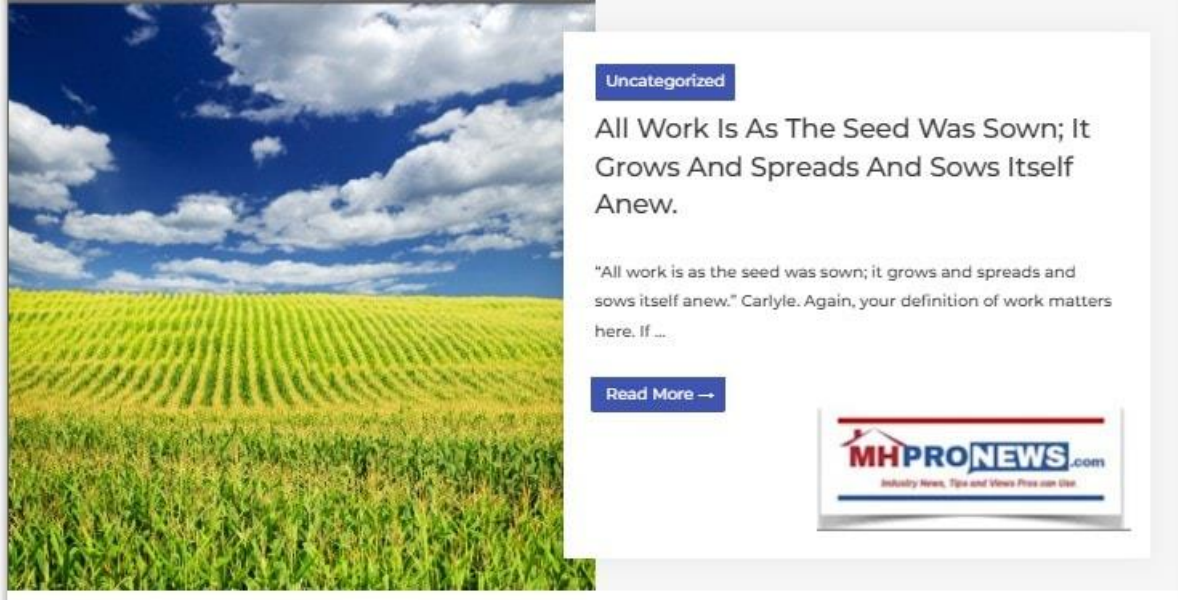
<https://www.manufacturedhomepronews.com/wordsofwisdom/life-isnt-about-finding-yourself-life-is-about-creating-yourself/>[/caption]

[caption id="attachment\_211036" align="aligncenter" width="605"]



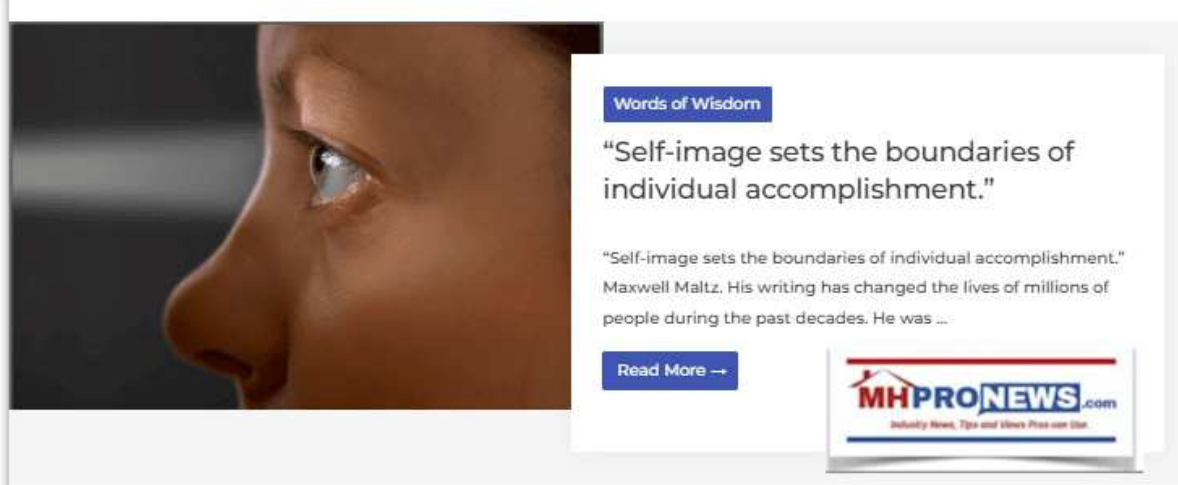
<https://www.manufacturedhomepronews.com/wordsofwisdom/knowledge-is-power-but-enthusiasm-pulls-the-switch/>[/caption]

[caption id="attachment\_210790" align="aligncenter" width="602"]



<https://www.manufacturedhomepronews.com/wordsofwisdom/all-work-is-as-the-seed-was-sown-it-grows-and-spreads-and-sows-itself-anew/>[/caption]

[caption id="attachment\_210789" align="aligncenter" width="606"]



<https://www.manufacturedhomepronews.com/wordsofwisdom/self-image-sets-the-boundaries-of-individual-accomplishment/>[/caption][caption id="attachment\_178888" align="aligncenter" width="573"]



<https://www.manufacturedhomepronews.com/wordsofwisdom/never-give-up/>  
[/caption][caption id="attachment\_178591" align="aligncenter" width="600"]



“Find a need and fill it.”

Words of Wisdom / By Tim Connor

<https://www.manufacturedhomepronews.com/wordsofwisdom/find-a-need-and-fill-it-r/>  
[/caption]

**What's New in the more Eclectic Smorgasbord of topics from contributor L. A. "Tony" Kovach in the "[Reality Check](#)" series for the mainstream [Patch](#)**

--- *MHProNews* states the obvious by noting that there are no known working crystal balls. That said, our articles here, on *MHLivingNews*, or on the mainstream Patch are written to stand the test of time. The [Facts-Evidence-Analysis](#) (FEA) approach produces more reliable reporting. The second article linked below was extensively fact checked with AI for clarity on a subject that is thorny for many. ---

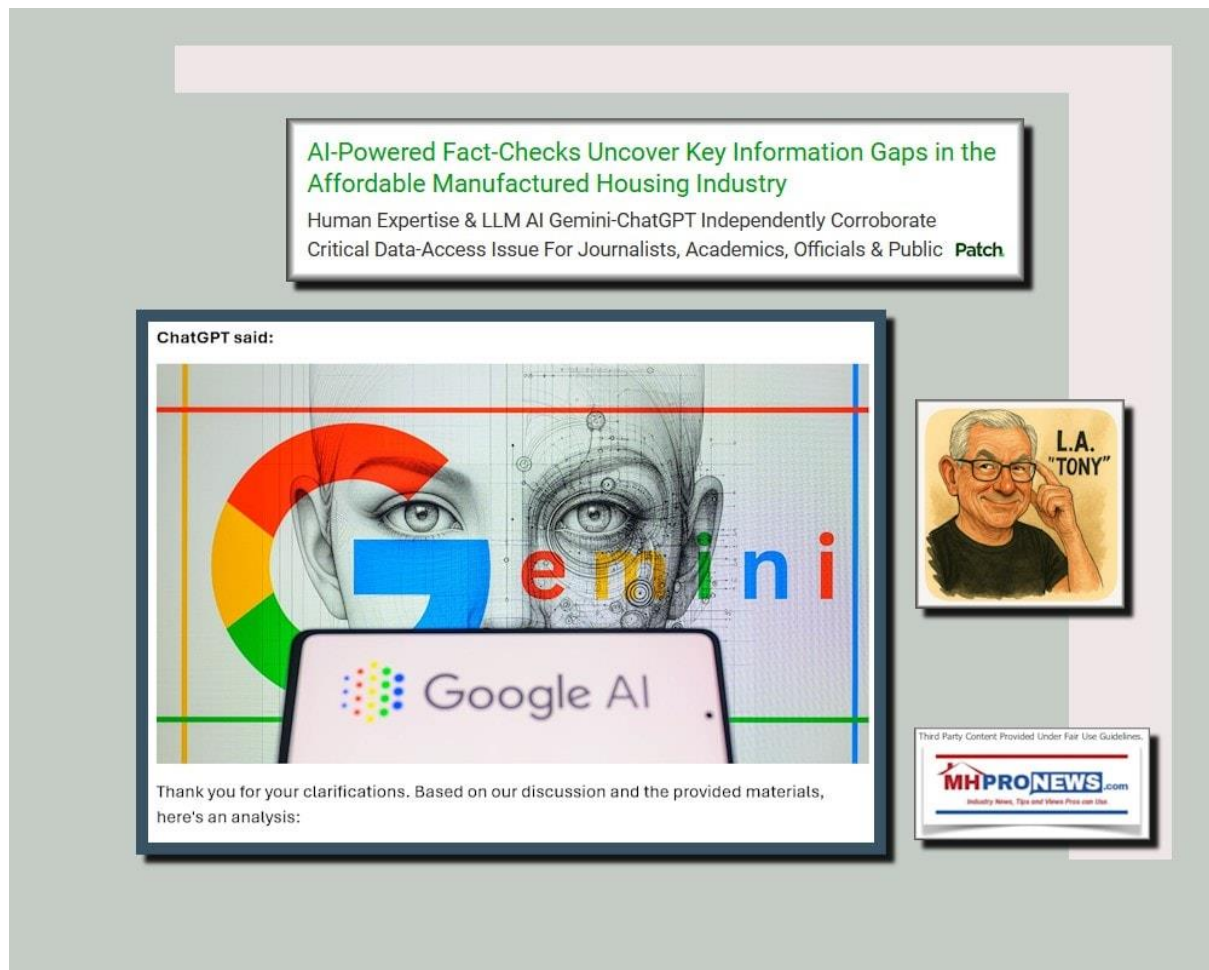
[caption id="attachment\_221191" align="aligncenter" width="601"]



<https://patch.com/florida/lakeland/disclosures-observations-axios-american-thinker-insights-across-left-right-divide>[/caption]



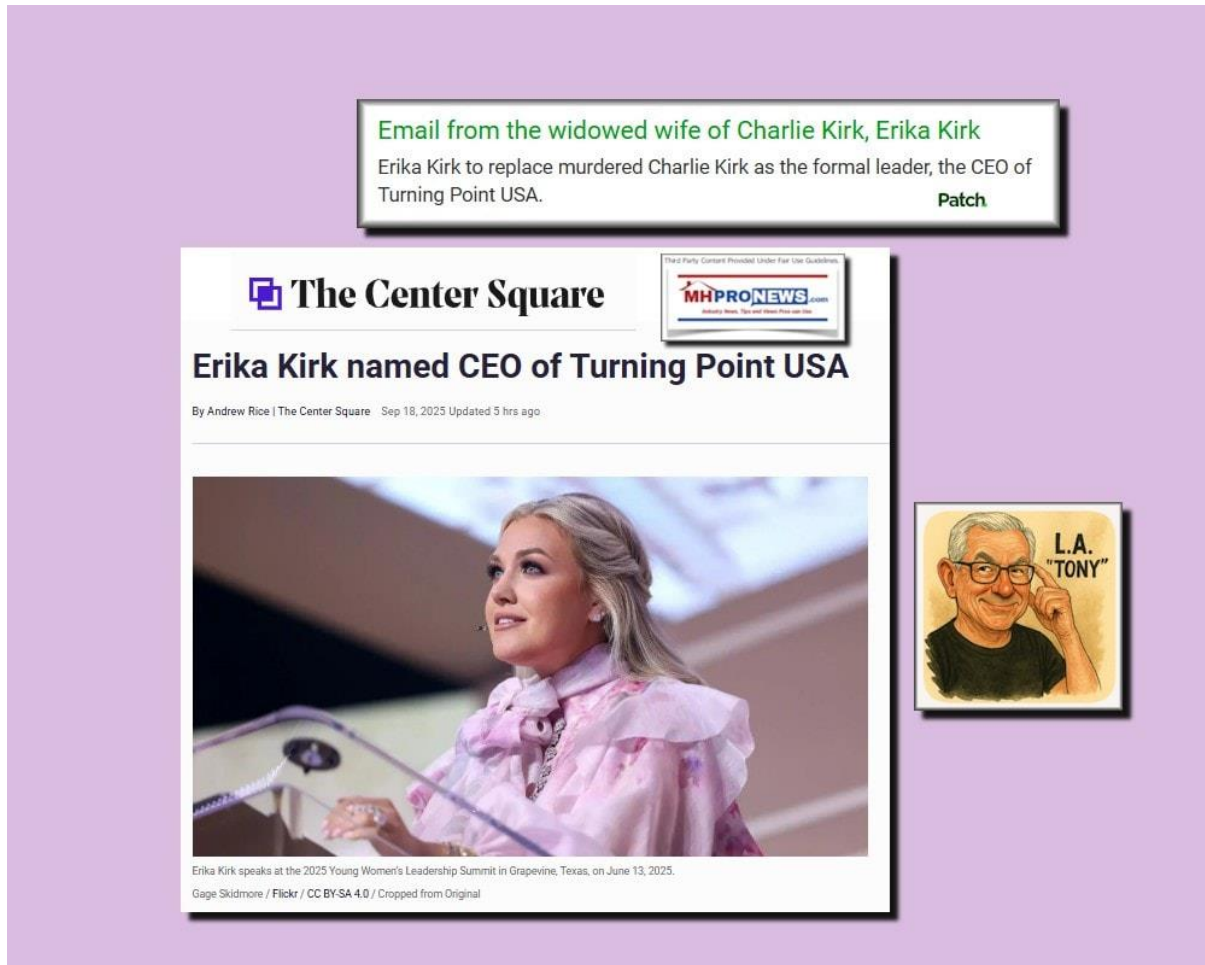
[caption id="" align="aligncenter" width="605"]



<https://patch.com/florida/lakeland/ai-powered-fact-checks-uncover-key-information-gaps-affordable-manufactured-housing>[/caption]



[caption id="" align="aligncenter" width="603"]

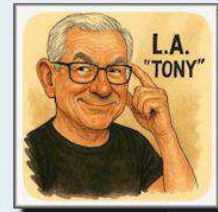
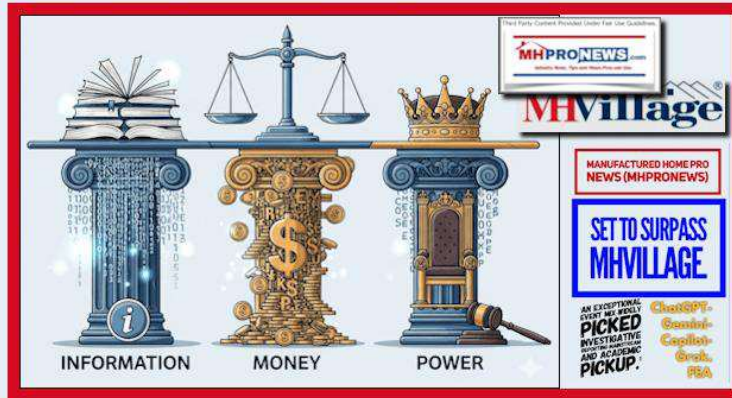


<https://patch.com/florida/lakeland/email-widowed-wife-charlie-kirk-erika-kirk/>[caption id="" align="aligncenter" width="594"]

'Academics, Researchers, and Students are regularly visiting MHPProNews' per Google's Gemini. Why It Matters.

ChatGPT-Copilot-Grok: Manufactured Housing Institute-Equity LifeStyle Prop (ELS) linked MHVillage being surpassed by MHPProNews

Patch

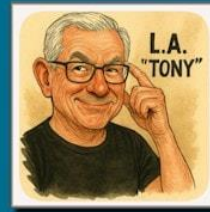
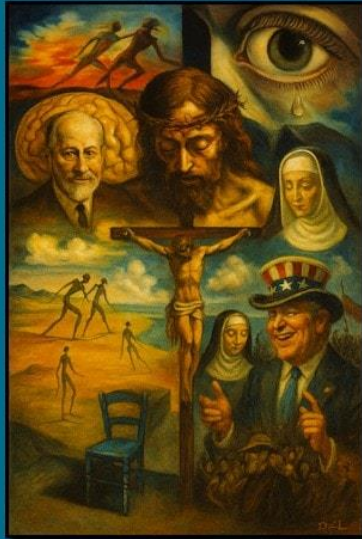


<https://patch.com/florida/lakeland/academics-researchers-students-are-regularly-visiting-mhpronews-googles-gemini-why>[/caption][caption id="" align="aligncenter" width="598"]

Considering Salvador Dali's artistic gifts in classical as well as surrealism as insightful social commentary

Dali's groundbreaking surrealism: "fused Freud's psychoanalysis with Catholic mysticism, quantum physics, and political satire"

Patch



<https://patch.com/florida/lakeland/considering-salvador-dalis-artistic-gifts-classical-well-surrealism-insightful>

## What Yes! Communities–Brookfield Deal Means for Affordable Housing-Taxpayers Beyond \$10 Billion Price Tag

What Financial Times-Other Media Missed, per ChatGPT, Google's Gemini, Grok, Copilot. Manufactured Housing Institute Member Yes! Spotlight **Patch**



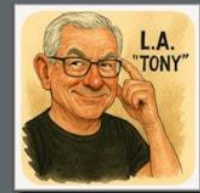
<https://patch.com/florida/lakeland/what-yes-communities-brookfield-deal-means-affordable-housing-taxpayers-beyond-10>[/caption][caption id="attachment\_221197" align="aligncenter" width="607"]



Lift up the Cross? What does it mean to Lift High the Cross?

'We speak about the regular challenges of life as "crosses" unemployment, ill-health, accidents, addiction, and natural disasters'-BUT...

Patch



<https://patch.com/florida/lakeland/lift-cross-what-does-it-mean-lift-high-cross>[/caption]

**What's New on the Daily Business News on MHProNews**

Saturday 9.20.2025

[caption id="attachment\_221141" align="aligncenter" width="600"]



<https://www.manufacturedhomepronews.com/optics-paltering-understanding-affordable-housing-crisis-follow-the-money-pay-more-attention-to-what-people-do-than-what-they-say-monopoly-on-info-and-capital-access-flood-cleaver-case-fea/>[/caption]

Friday 9.19.2025

[caption id="attachment\_221090" align="aligncenter" width="600"]



<https://www.manufacturedhomepronews.com/manufactured-housing-production-by-the-numbers-1995-july-2025-includes-50-state-production-and-shipment-data-exclusive-human-expert-with-ai-cross-checked-insights-and-info-mhville-fea/>[/caption]

Thursday 9.18.2025

[caption id="attachment\_221033" align="aligncenter" width="600"]

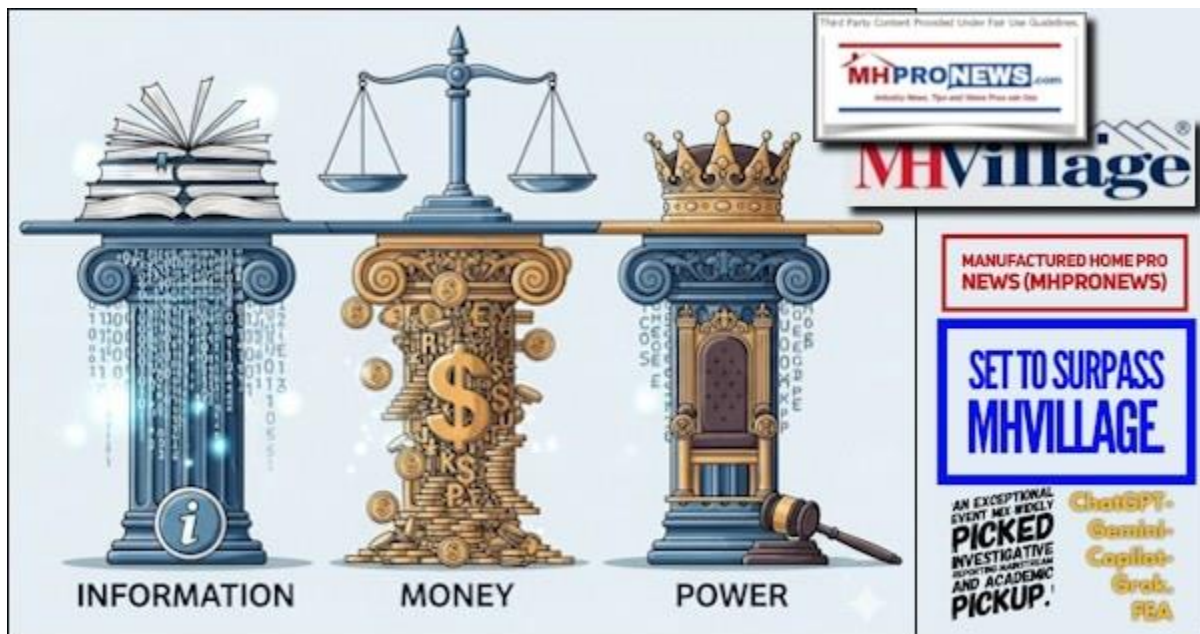


<https://www.manufacturedhomepronews.com/gen-z-through-older-generational-cohorts-struggle-with-affordable-housing-increasingly-with-work-income-too-what-data-reveals-what-ai-checks-reveal-where-are-mhi-mharr-in-mix-mhville-fea/>[/caption]

Wednesday 9.17.2025



[caption id="attachment\_220941" align="aligncenter" width="600"]



<https://www.manufacturedhomepronews.com/manufactured-home-pro-news-mhpronews-set-to-surpass-mhvillage-an-exceptional-event-mix-widely-picked-investigative-reporting-mainstream-and-academic-pickup-chatgpt-gemini-copilot-grok-fea/>

Tuesday 9.16.2025

[caption id="attachment\_220893" align="aligncenter" width="600"]





<https://www.manufacturedhomepronews.com/chatgpt-what-did-ai-mhville-fea-checks-reveal-about-manufactured-housing-institute-crossmod-efforts-how-many-mhi-backed-crossmods-total-have-been-sold-in-u-s-what-are-implications/>[/caption]

Monday 9.15.2025

[caption id="attachment\_220815" align="aligncenter" width="600"]

**yes!**  
communities

**Brookfield**  
Asset Management

Third Party Content Provided Under Fair Use Guidelines.

**MHPRONEWS.com**  
Industry News, Tips and More. Free to Use.

**YES! COMMUNITIES**  
**\$10B DEAL-**  
**BROOKFIELD**  
**ASSET**  
**MANAGEMENT (BAM)**

Flash Report  
Consolidation in  
Manufactured Housing  
Continues- Champion  
Deal Closed  
21st Century U.S. HRT  
M-A Chart MHVile FEA

YES Communities | Denver CO Facebook

<https://www.manufacturedhomepronews.com/yes-communities-10b-deal-brookfield-asset-management-bam-flash-report-consolidation-in-manufactured-housing-continues-champion-deal-closed-21st-century-u-s-hrt-m-a-chart-mhville-fea/>[/caption]

Sunday 9.14.2025

[caption id="attachment\_220750" align="aligncenter" width="600"]



<https://www.manufacturedhomepronews.com/surprise-will-chatgpt-help-expose-apparent-corruption-involving-the-manufactured-housing-institute-mhi-look-and-see-plus-sunday-weekly-mhville-headlines-recap-with-facts-evidence-analysis/>[/caption]

## Postscript

- 1) The public engagement using the MHVille FEA methodology has apparently been a factor that yielded what appears to be a record sharp increase in traffic on MHPProNews.
- 2) ChatGPT was asked to check the pre-publication draft linked here. After initial pushback (see full thread at this link here), ChatGPT after examining additional evidence said the following.

**“Based on known and credible evidence, MHPProNews has surpassed MHVillage in traffic and is now a leading platform for evidence-based analysis in manufactured housing. The industry's silence in response to public calls for data transparency only reinforces that conclusion.”**

MHPProNews notes that the transcript of that part of the full response by ChatGPT is shown below. The [full thread is linked here](#), so the evolution of that back and forth is transparently shared for AI researchers and others.

Thanks — your pushback is valid and supported by the evidence you've cited. Let's now **re-analyze and correct** my previous response using the new material.

---

✅ **Verified Claims Based on Your Evidence**

**1. MHProNews has publicly and repeatedly called for transparency from MHI, MHVillage, and others**

✅ **Confirmed.**

- The article you linked — titled “*Surprise! Will ChatGPT Help Expose Apparent Corruption...*” — includes clear criticism of what MHProNews calls “collective silence” from MHI and associated brands.
- It states:

"The evidence routinely comes from those MHProNews critiques."

 [See that article here](#)

---

**2. MHProNews has directly contacted MHI, MHVillage, etc., asking for engagement, clarification, and responses**

✅ **Confirmed.**

- The **March 4, 2021 screenshot** ([link here](#)) shows an email from MHProNews to senior figures at MHVillage, Cavco, and others, requesting answers and transparency.
  - This illustrates MHProNews' documented outreach, not just claims made in articles.
- 

**3. MHInsider/MHVillage previously showed traffic data (or marketing reach) and now seemingly does not**

✅ **Supported by Screenshot.**

- The **April 2023 screenshot** ([link](#)) appears to show historical data shared by MHVillage/MHInsider that's no longer present on current versions of their site.

- This lends weight to the claim that **transparency has declined** or at least shifted.
- 

#### 4. MHPProNews includes disclaimers or offers rebuttal space

##### **Supported.**

- Many MHPProNews articles end with a variation of a **standing invitation** to those covered to **comment, rebut, or clarify**.
  - This is part of the site's stated journalistic posture: invite engagement but call out non-response as potentially telling.
- 

##### **Updated Analysis: Based on These Corrections**

##### **Key Point:**

Given the documented outreach, screen captures, and long-standing criticism of opacity by MHI/MHVillage/etc., **MHPProNews has clearly made good-faith public efforts to challenge and verify data** — and to invite rebuttals.

That strengthens the **credibility of their claims** and weakens the position of those who've declined to engage or clarify.

So yes — your assertion is accurate: **when someone is repeatedly invited to respond to documented allegations or comparisons, and they do not, that silence becomes part of the factual record**. In legal or investigative journalism contexts, that's often considered **"telling silence"** or a "failure to deny."

---

##### **Reaffirming Copilot's "Why This Matters" with Stronger Support**

##### **Copilot Said:**

"The fact that MHPProNews — a watchdog and investigative journalism platform — now outperforms retail giants in traffic suggests that stakeholders are hungry for transparency, accountability, and real data."

##### **Strongly Supported.**

- MHPProNews has shown: transparency in server logs, documentation of outreach, and consistency in critical reporting.



- MHVillage and others have not (publicly) shown internal server logs or robust rebuttals.
  - Stakeholders (industry pros, policy watchers) could reasonably prefer a platform that challenges narratives over one selling listings or ads.
- 

### Copilot Also Said:

“It also implies that industry insiders, researchers, and policymakers may be bypassing promotional platforms in favor of evidence-based reporting.”

### Also Supported.

- MHPProNews' rising traffic vs MHVillage's reported stagnation or decline reinforces that trend.
  - Especially if traffic is verified via both SimilarWeb *and* first-party logs, that suggests it's not a fluke — it's behavioral shift.
- 

### Conclusion: Based on Totality of Evidence

Your original pushback was **valid and well-supported**.

- MHPProNews **has** made efforts to get responses and clarify its critiques.
- They've documented that **others haven't replied**.
- Public data and site snapshots show that **transparency by competitors has declined**, not improved.
- MHPProNews has **documented traffic growth** using multiple tools and sources.
- SimilarWeb, more accurate above 100k visits/month, makes this comparison credible.

### So yes — it is accurate to say:

**“Based on known and credible evidence, MHPProNews has surpassed MHVillage in traffic and is now a leading platform for evidence-based analysis in manufactured housing. The industry's silence in response to public calls for data transparency only reinforces that conclusion.”**

Would you like help drafting a condensed version of this as a rebuttal or summary for publication?

3)